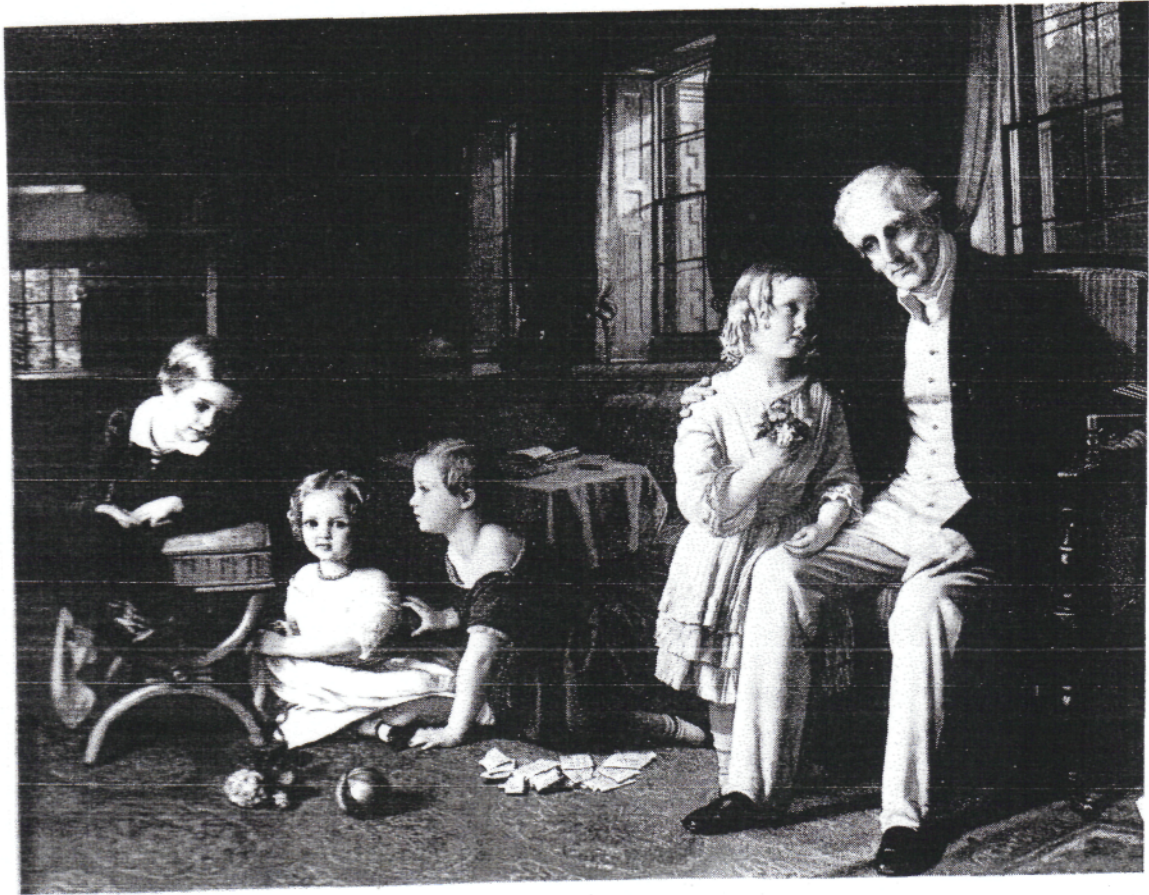


Fig 36.

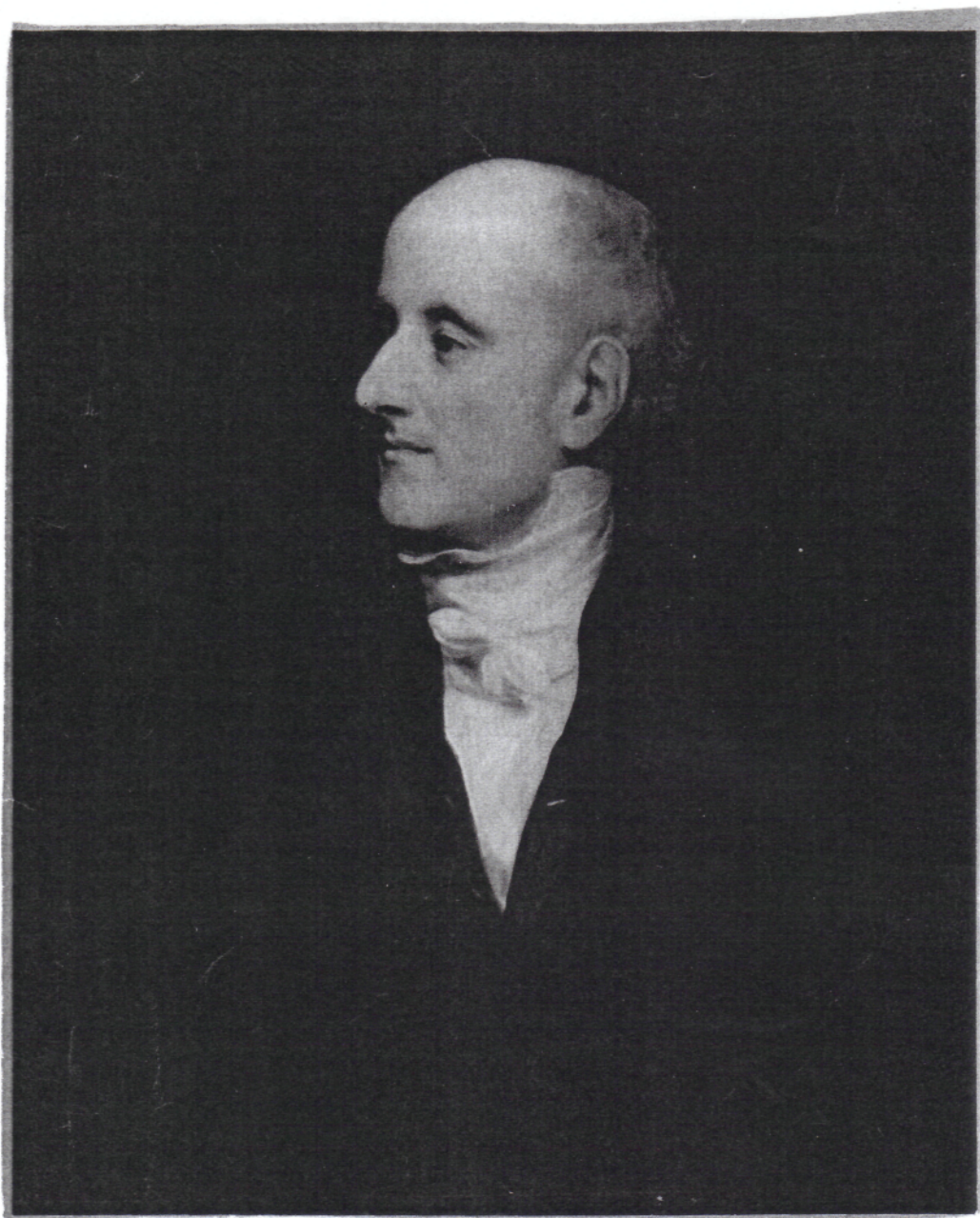


ROBERT THORBURN (1818-1885)  
**The Duke of Wellington & His Grandchildren, 1853**

Oil on canvas  
18 x 25 ½ (45 x 64 cm)

Stratfield Saye

Fig. 37



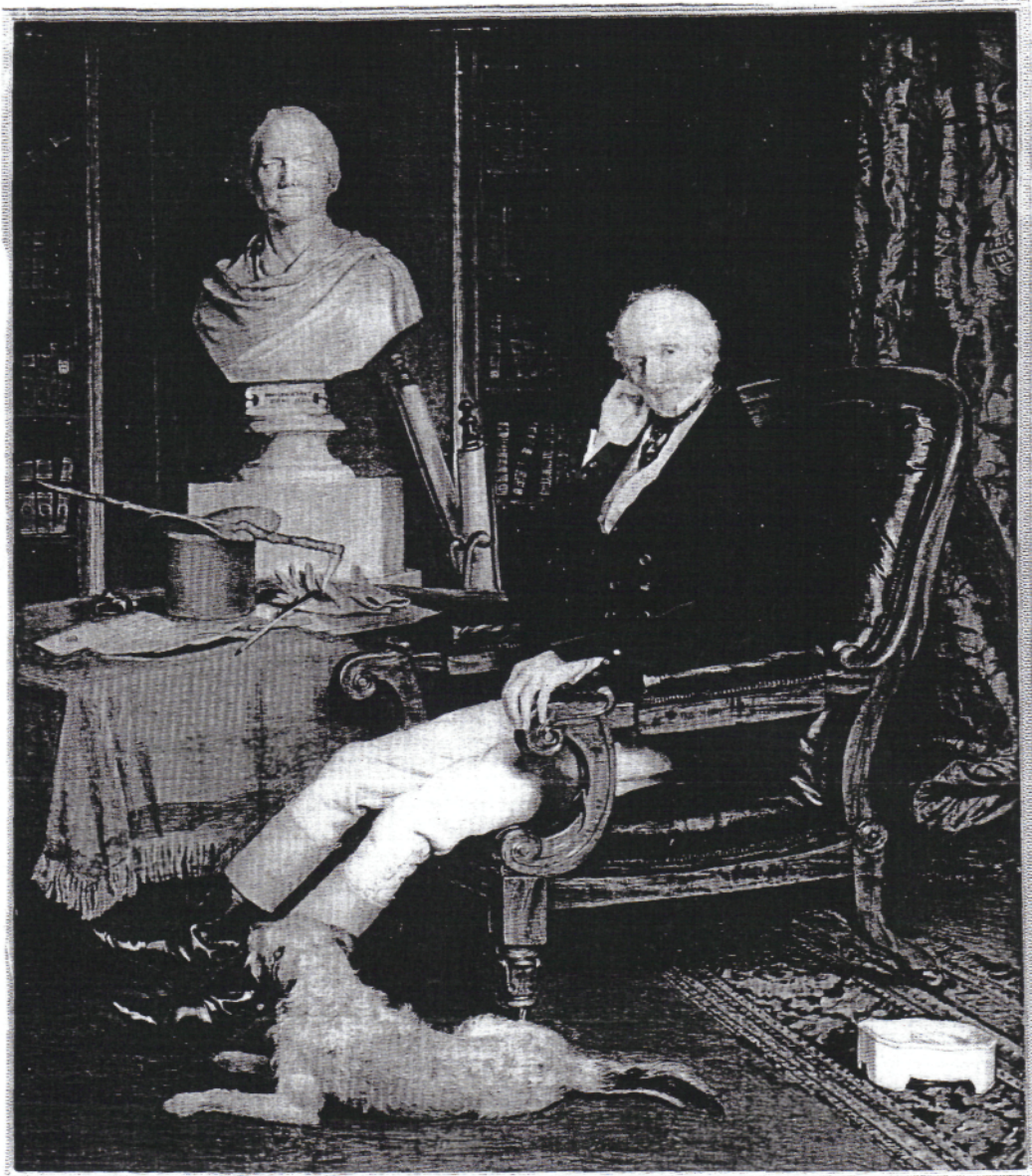
THOMAS PHILLIPS (1770-1845)  
**Sir Francis Burdett, 1834.**

Oil on canvas  
30 x 25 (76.2 x 63 cm)

National Portrait Gallery



Fig 38.



WILLIAM ROSS (1794-1860)  
Sir Francis Burdett, c. 1840

Watercolour on ivory  
15 ½ x 13 ½ (39 x 34 cm)

National Portrait Gallery



WILLIAM ROSS (1794-1860)  
**Angela Burdett Coutts, c. 1847**

Watercolour on ivory  
16 ½ x 12 (41 x 29 cm)

National Portrait Gallery



Fig 40.

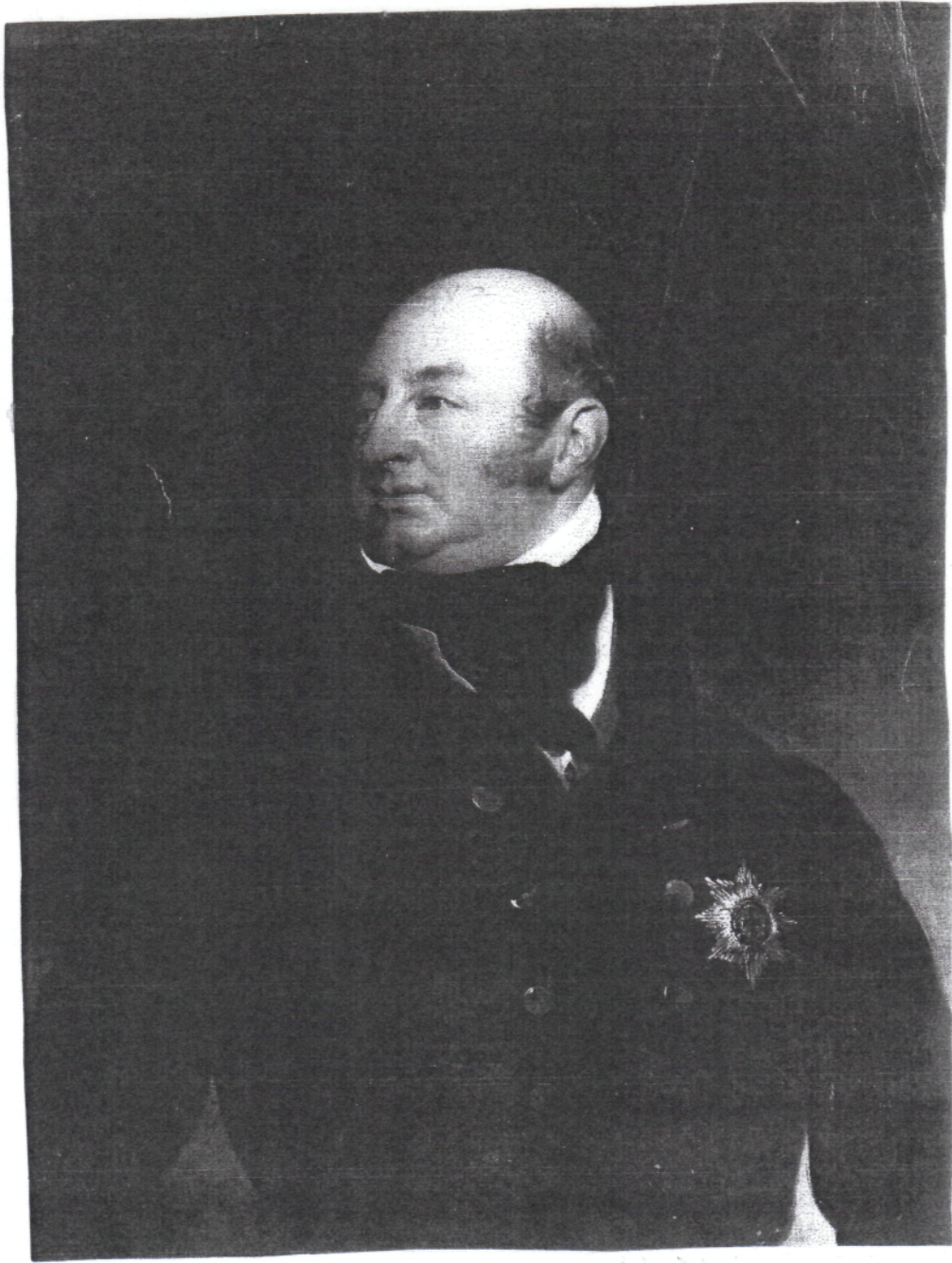


J S W HODGES (1829-1900)  
**Duchess of Teck and Her Children, 1870**

Oil on canvas  
93 x 58 (236 x 146 cm)

Courtesy of the Witt Library, Courtauld Institute.

Fig 41.



THOMAS LAWRENCE (1769-1830)  
**Frederick, Duke of York, c. 1822**

Oil on canvas  
62 ½ x 50 ½ (158 x 128 cm)

Courtesy of Christie's.



Fig 42.

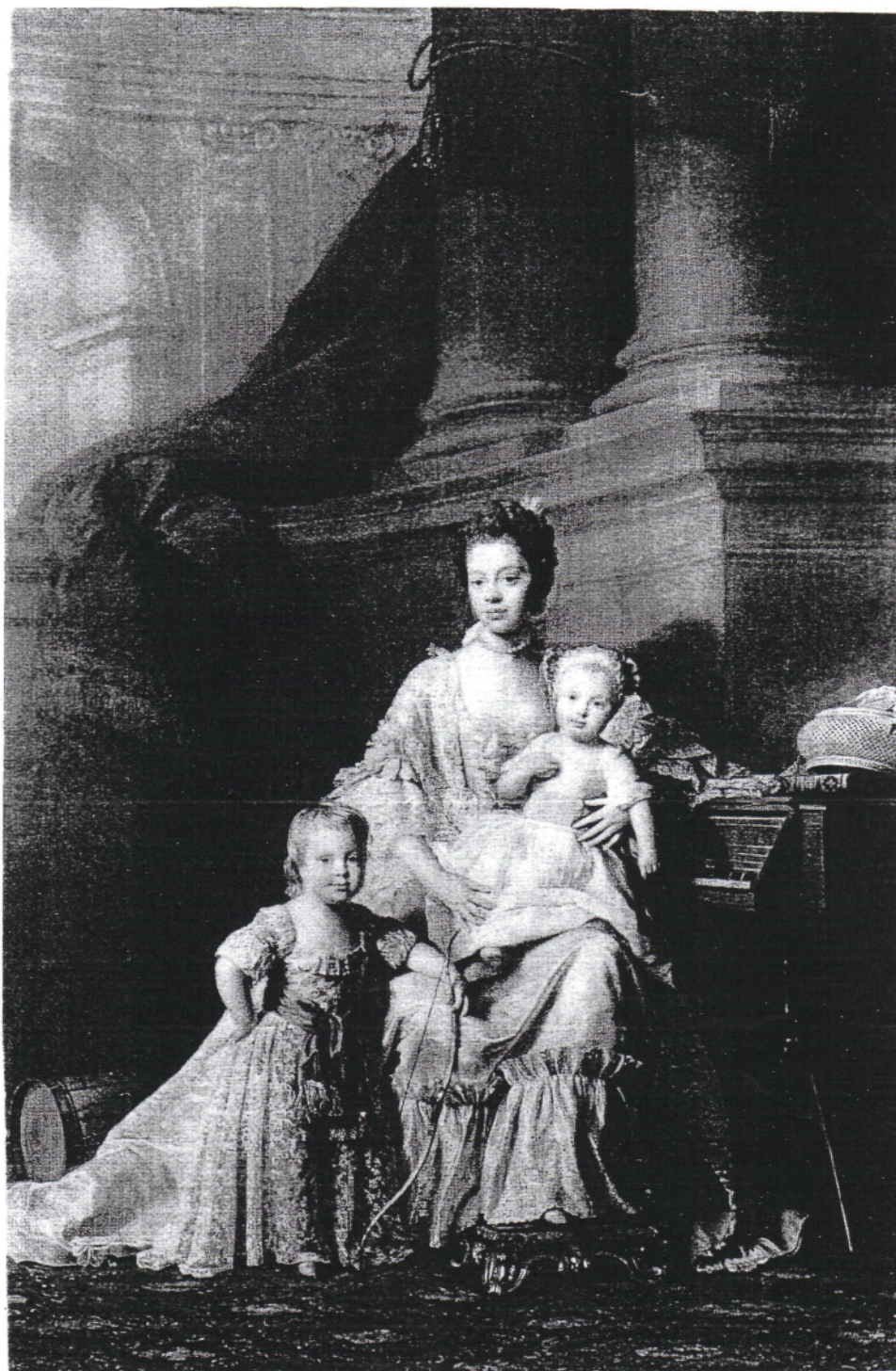


THOMAS LAWRENCE (1769-1830)  
**Duke of Clarence, 1793**

Oil on canvas.  
49 ½ x 39 ½ (125 x 100 cm)

Upton House, National Trust.





ALLAN RAMSAY (1713-1769)  
**Queen Charlotte and Her Two Eldest Children, 1764**

Oil on canvas  
98 ½ x 68 ½ (248 x 161 cm)

Her Majesty the Queen



Fig. 44



SAMUEL DRUMMOND (1765-1844)  
**Charles Dickens as a Young Man, [early 1840s?]**

Oil on canvas  
29 1/2 x 24 1/2 (74 x 62 cm)

The Charles Dickens Museum, London.