

## INTERIORS AND EXTERIORS. NO. 8.



AT A PICTURE SALE.

HENRY FURNISS (1854-1925)

"At A Picture Sale" (Angela Burdett Couitts third from right)

Fig 12.11



RAPHAEL (1483-1520)  
**The Agony in the Garden** c. 1504-1505.

Oil on Wood  
9 1/2 x 11 3/8 (24 x 28 cm)

Metropolitan Museum of Art

Fig 13.



JOSHUA REYNOLDS, (1723-1792)  
**Cupid & Psyche**, before 1788

Oil on Canvas  
55 x 66 (139 x 167 cm)

Private Collection

Fig 14.



JOSHUA REYNOLDS, (1723-1792)  
**The Mob Cap**, date unknown.

Oil on Canvas  
42 ½ x 32 ½ (107 x 82 cm)

Private Collection

Fig 15.



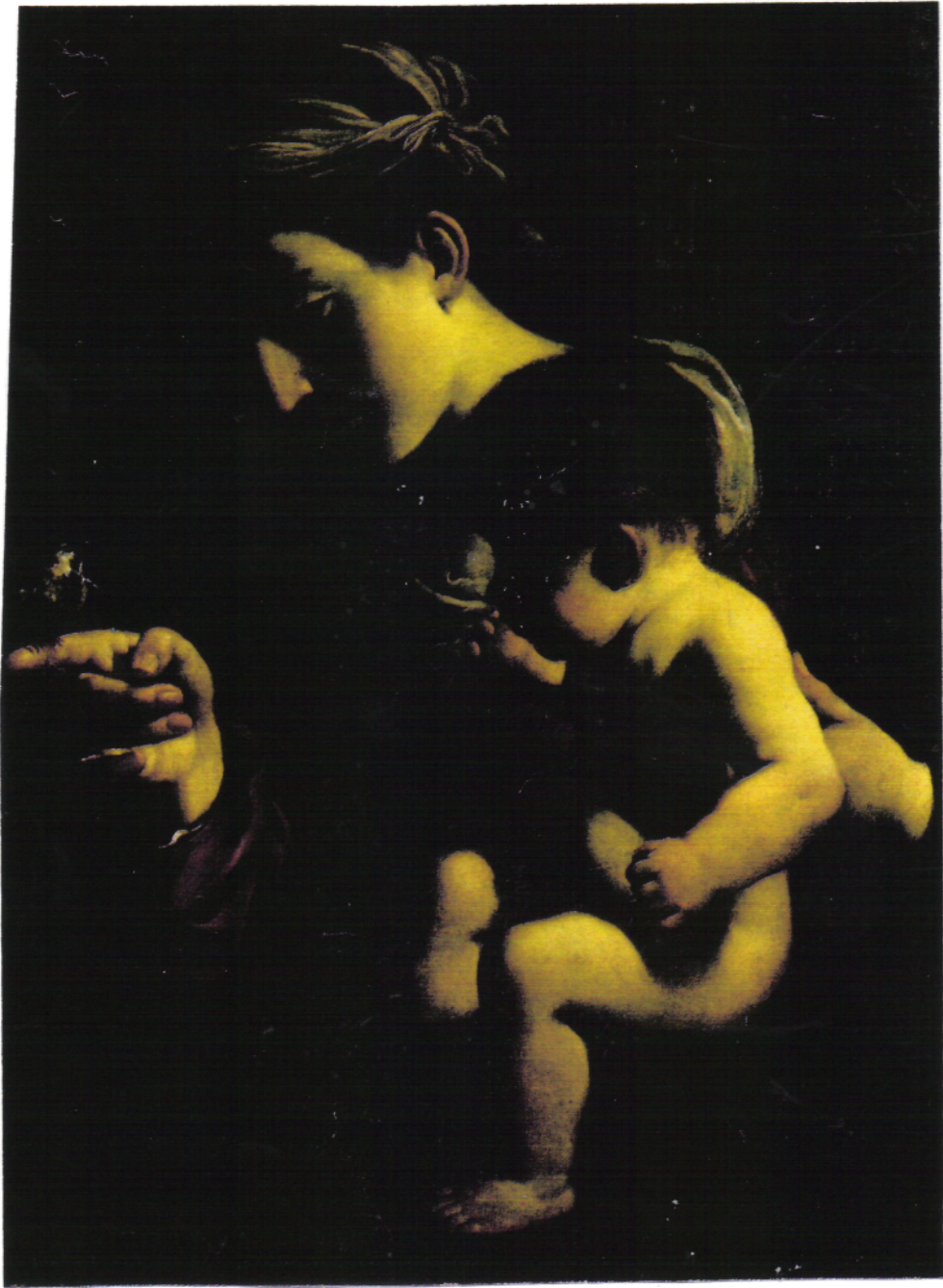
JOSHUA REYNOLDS (1723-1792)  
**Girl Sketching** c. 1780-1782.

Oil on Canvas  
20 ½ x 24 ½ (74 x 62 cm)

Untraced.

Courtesy of Christie's.

Fig 16.

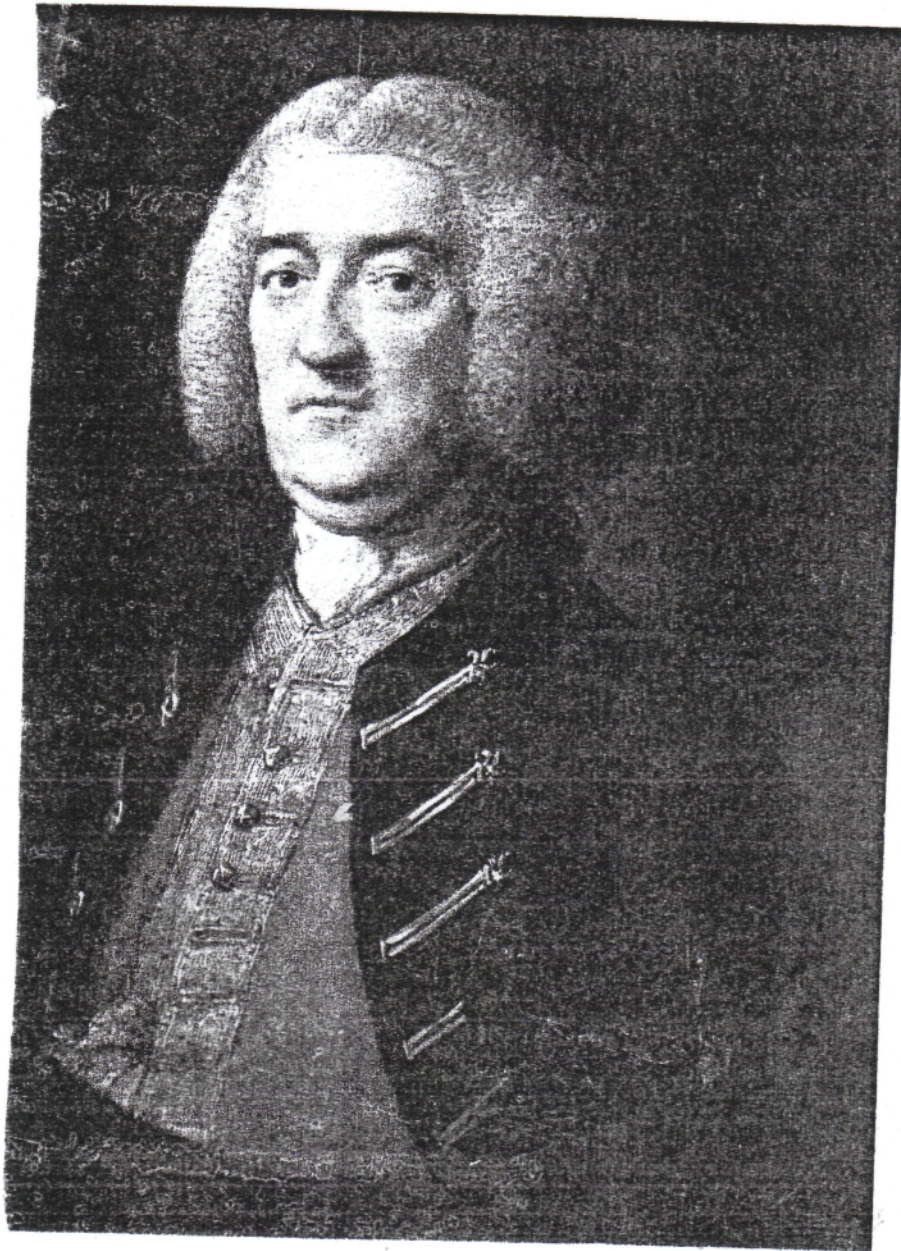


GUERCINO (1591-1666)  
**Madonna of the Sparrow, 1615**

Oil on canvas  
30 ½ x 22 ½ (77.4 x 57.1 cm)

Private Collection

Fig 17.



THOMAS GAINSBOROUGH (1727-1788)  
**Portrait of a Gentleman in Blue**, date unknown.

Oil on canvas  
29 ½ x 24 (74 x 60 cm)

Parham House, West Sussex

Fig 18.



FRANCOIS DE TROY  
The Duchesse de Ventadour and the Duc de Bretagne c. 1710.

Formerly:

NICOLAS DE LARGILLIERE (1656-1746)  
The Duc d'Anjou and His Governess [early 18<sup>th</sup> century?]

Oil on canvas  
64 ½ x 60 (163 x 152 cm)

Courtesy of Christie's.



Fig 19.

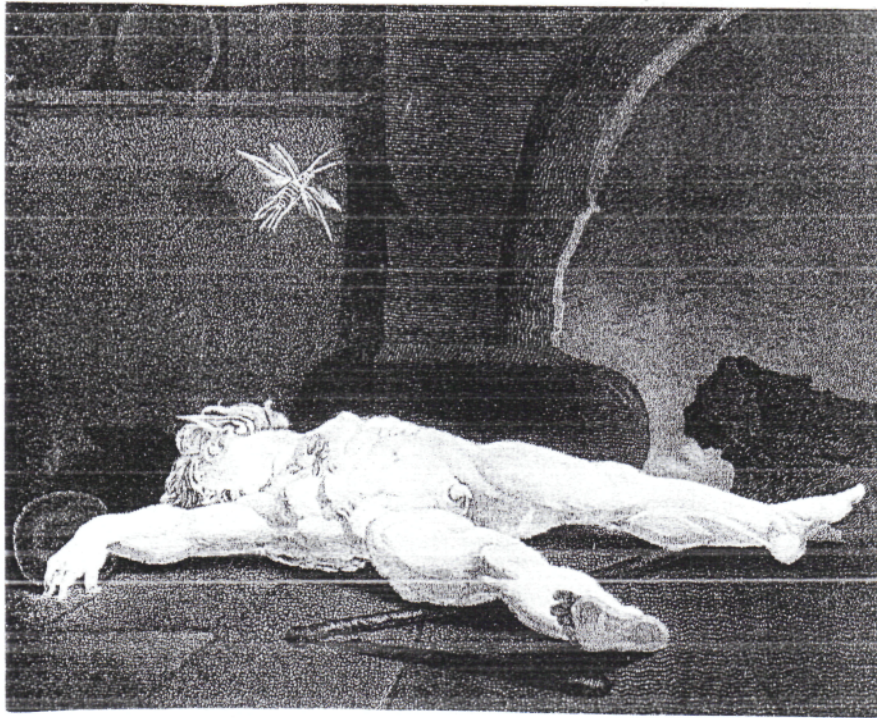


HENRY FUSELI (1741-1825)  
**Ariel**, c.1800-10.

Oil on canvas  
35 ½ x 27 (91 x 68 cm)

Folger Shakespeare Library, Washington DC.

Fig 20.



MOSES HAUGHTON (c. 1772 after 1848) after HENRY FUSELI (1741-1825)  
**Puck**, original untraced, 1810-20.

Engraving after original painting,  
11 ½ x 11 ½ (29 x 29 cm)

British Museum