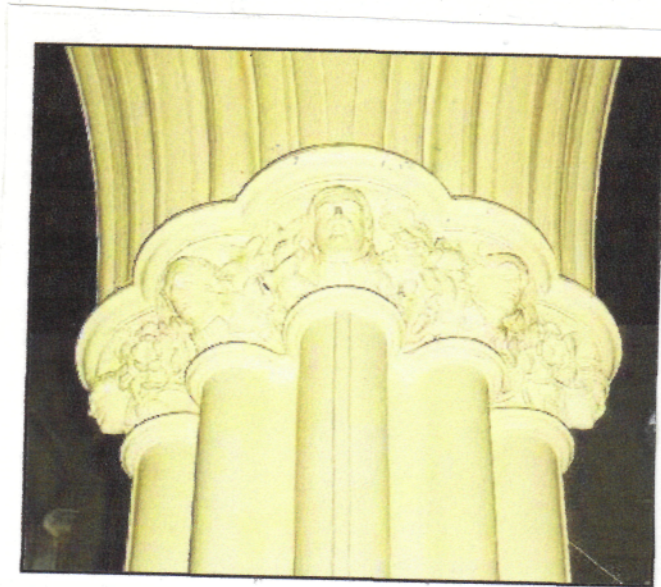


Fig. 72



Capital of the first column carved with eight heads, including Queen Victoria, Burdett Coutts and Bishop Blomfield.

Reproduced courtesy of St Stephen's Church, Westminster.

Fig. 73



Chancel Ceiling of St. Stephen's Church, Westminster, 1850.

Photograph: Author's Own.

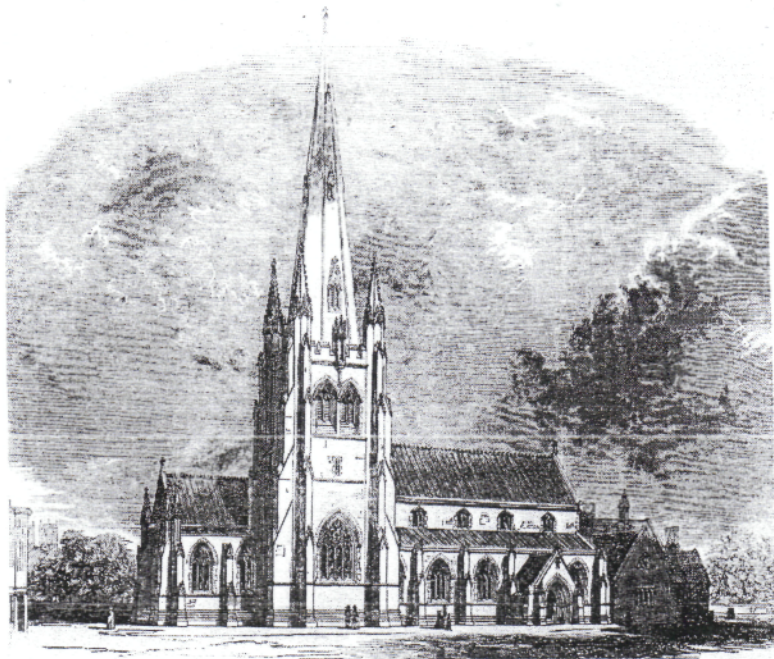
Fig. 74



Minton Floor Tiles, St. Stephen's Church, Westminster, 1850.

Photographs: Author's Own.

Fig 75.



UNKNOWN ARTIST.
St. Stephen's Church, Westminster, 1850

Contemporary Illustration, *The Illustrated London News*, July 1847.

Fig. 76

Above the West Door, Burdett Coutts as an Angel carrying a model of the church.



Stained glass depicting arms of :
Diocese of London
Westminster Abbey (St Stephens
Deanery)
Diocese of Capetown
Diocese of Adelaide and
Baroness Angela Burdett Coutts

(1947 replacement of original
glass).

Fig. 77



FRANCIS DOLLMAN (1812-1900)

Interior of St Stephen's Church showing original texts and diapering to wall.

Original drawing from Charles Lock Eastlake, *History of the Gothic Revival* (1872) in J S Curl, *Piety Proclaimed*, (2001).

St. Stephen's Church..

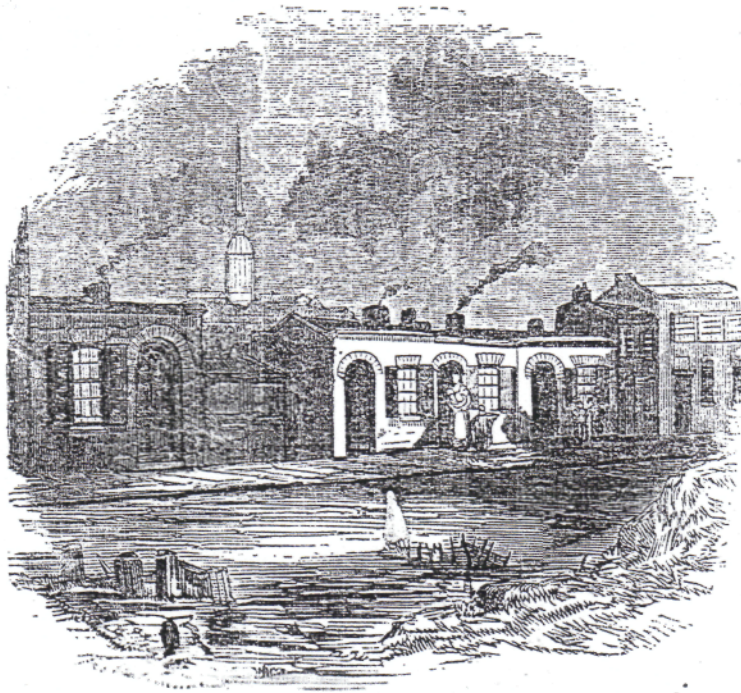
Fig 78.



Altar of St. Stephen's Church, 1850.

Photograph: Author's Own.

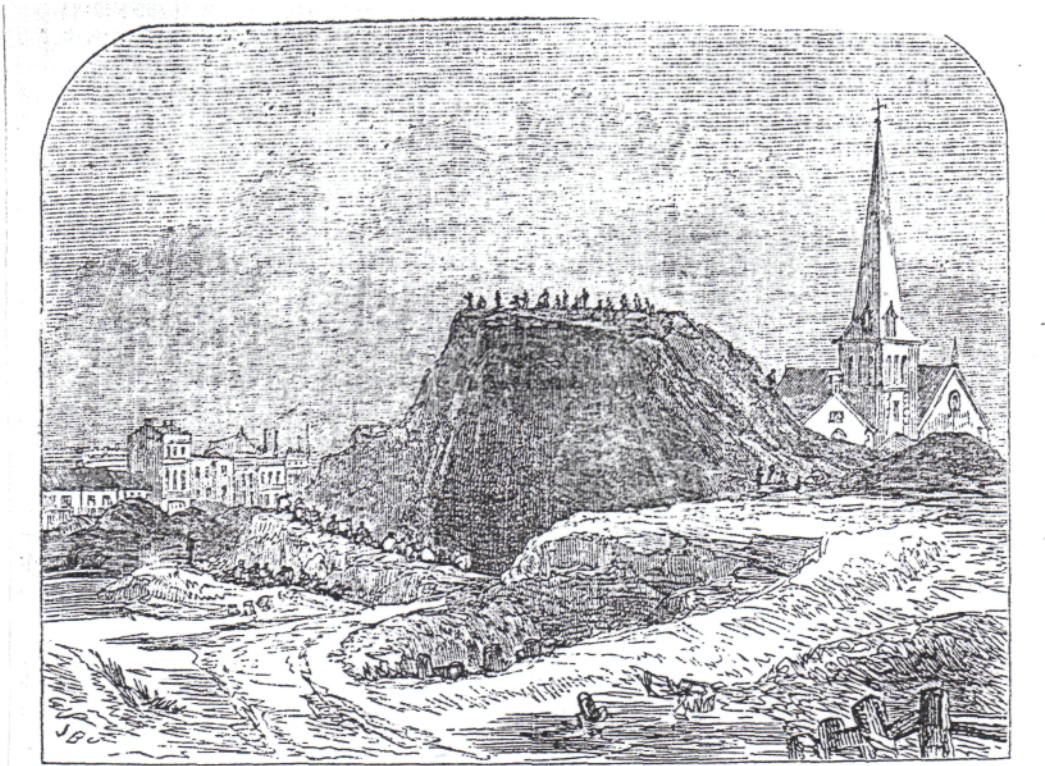
Fig 79.



Nova Scotia Gardens, Bethnal Green

Contemporary Illustration.
The Builder, April 25 1857.

Fig 80



THE DUST HEAP
"Nova Scotia Gardens...And What Grows There."

Contemporary Illustration.
The Builder, April 25 1857.