

AL335

New Issue  
Dec. 1935.

# International Courses

---

---

THE FLORENCE NIGHTINGALE  
INTERNATIONAL FOUNDATION

---

---

PROSPECTUS

1935 - 36

# International Courses

offered by

THE FLORENCE NIGHTINGALE  
INTERNATIONAL FOUNDATION

(Formed by the joint action of the  
LEAGUE OF RED CROSS SOCIETIES and the  
INTERNATIONAL COUNCIL OF NURSES)

at

BEDFORD COLLEGE FOR WOMEN  
(University of London)

in conjunction with

THE COLLEGE OF NURSING  
London

---

SESSION 1935-1936

---

FLORENCE NIGHTINGALE  
INTERNATIONAL HOUSE,  
15, MANCHESTER SQUARE,  
- - - LONDON, W. 1. - - -



I. Course in Public Health

---

II. Course for Nurse Administrators  
and  
Teachers in Schools of Nursing.

---

III. Course in Social Work.

THE  
FLORENCE NIGHTINGALE INTERNATIONAL FOUNDATION.

(FORMED BY THE JOINT ACTION OF THE LEAGUE OF RED CROSS SOCIETIES  
AND THE INTERNATIONAL COUNCIL OF NURSES.)

*President :*

Dame ALICIA LLOYD-STILL, D.B.E., R.R.C., S.R.N.

*Hon. Presidents :*

Mrs. BEDFORD FENWICK, S.R.N.

Miss M. ADELAIDE NUTTING, A.M., D.N.

*Hon. Treasurer :*

Sir ARTHUR STANLEY, G.B.E., C.B., M.V.O., LL.B

*Vice-Presidents :*

Mme. CELMINS (Latvia).

Mlle. CHAPTAL (France).

Mrs. DRAPER (U.S.A.).

Miss ANNIE GOODRICH, Sc.D., M.A., R.N. (U.S.A.).

Miss JEAN GUNN, R.N. (Canada).

Miss HAGIWARA (Japan).

Mlle. d'HAUSSONVILLE (France).

Mlle. HELLEMANS (Belgium).

Miss MARGARET HUXLEY, M.A. (Irish Free State).

Miss BERGLIOT LARSSON (Norway).

Dr. ALICE MASARYK, Ph.D. (Czecho-Slovakia).

Mlle. ODIER (Switzerland).

Miss VENNY SNELLMAN (Finland).

Marchesa di TARGIANI GIUNTI (Italy).

*Secretary :*

Miss OLIVE BAGGALLAY, S.R.N.

*Warden :*

Miss NAN. L. DORSEY, R.N.

## COMMITTEE OF MANAGEMENT.

### *Chairman :*

Dame ALICIA LLOYD-STILL, D.B.E., R.R.C., S.R.N.,  
President, F.N.I.F.

### *Treasurer :*

The Hon. Sir ARTHUR STANLEY, C.B.E., C.B., M.V.O., LL.D.

### *League of Red Cross Societies :*

Mrs. CECIL CARTER, A.R.R.C., S.R.N., Chief of Nursing  
Division, L.O.R.C.S.

Mlle. LUCIE ODIER, Member of the Nursing Advisory Board,  
L.O.R.C.S.

Mr. ERNEST SWIFT, Secretary-General, L.O.R.C.S.

### *International Council of Nurses :*

Mrs. BEDFORD FENWICK, S.R.N., President, National Council  
of Nurses of Great Britain.

Miss BERGLIOT LARSSON, President, Norwegian Nurses'  
Association.

Mlle. CHAPTAL, Présidente de l'Association d'Infirmières  
Diplômées de l'Etat Français.

### *The British Red Cross :*

Lieut.-General Sir HAROLD FAWCUS, K.C.B., C.M.G., D.S.O.,  
Director-General, British Red Cross.

Dame SARAH SWIFT, G.B.E., R.R.C., Matron - in - Chief,  
British Red Cross.

### *National Council of Nurses of Great Britain :*

Miss M. S. COCHRANE, R.R.C., S.R.N., Vice - President,  
National Council of Nurses of Great Britain.

Miss E. MUSSON, C.B.E., R.R.C., S.R.N., LL.D., Vice-President,  
National Council of Nurses of Great Britain.

### *Bedford College :*

Miss G. E. M. JEBB, M.A., Cantab., Principal, Bedford College  
for Women.

### *College of Nursing :*

Miss D. S. COODE, S.R.N., President, College of Nursing.

### *Old International Association :*

Mlle. CÉCILE MECHELYNCK, Directrice de l'Ecole Universitaire  
d'Infirmières, Fondation Edith Cavell-Marie Depage, Bruxelles.

## BEDFORD COLLEGE COMMITTEE.

Miss G. E. M. JEBB, M.A., Cantab., Principal of Bedford College, *Chairman*.

Miss OLIVE BAGGALLAY, S.R.N., Bedford College.

Mrs. CECIL CARTER, A.R.R.C., S.R.N., Member of Committee of Management, Florence Nightingale International Foundation.

Miss D. S. COODE, S.R.N., President, College of Nursing.

Miss R. E. DARBYSHIRE, R.R.C., S.R.N., Matron, University College Hospital, London.

Mrs. EDKINS, D.Sc., London, Reader in Physiology.

Dame ALICIA LLOYD-STILL, D.B.E., R.R.C., S.R.N., President, Florence Nightingale International Foundation.

Miss H. C. PARSONS, S.R.N., Director, Education Department, College of Nursing.

C. A. MACE, M.A., Cantab., Reader in Psychology.

Miss MACMANUS, O.B.E., S.R.N., Matron, Guy's Hospital, London.

Miss OLIVE MONKHOUSE, M.B.E., B.A., London, Secretary, Bedford College, *Secretary*.

Lt.-Col. G. S. PARKINSON, D.S.O., M.R.C.S., L.R.C.P., D.P.H., Assistant Director, Public Health Division, London School of Hygiene (\*).

Dr. H. A. MESS, Ph.D., Director of Social Studies, Bedford College.

Mrs. WILLIAMS, B.A., Manchester, Lecturer in Economics.

---

(\*) The London School of Hygiene and Tropical Medicine have shown their interest by accepting an invitation to appoint a representative on this Committee, and by permitting a member of their Staff to give Courses of Lectures on Hygiene.

## Requirements for Admission

Applicants should be between 21 and 41 years of age, and the following documents must be forwarded with their applications :

A MEDICAL CERTIFICATE OF GOOD GENERAL HEALTH INCLUDING A STATEMENT THAT TEETH ARE IN GOOD CONDITION.

A DECLARATION, ENDORSED BY THE NATIONAL FLORENCE NIGHTINGALE COMMITTEE, OR, IF SUCH COMMITTEE DOES NOT EXIST, BY THE NATIONAL RED CROSS SOCIETY, OR THE NATIONAL NURSES' ASSOCIATION, OF THE APPLICANT'S COUNTRY OF ORIGIN, TESTIFYING :

- (a) to the good character, general education and professional training of the applicant. Applicants must have had a general education corresponding to the English secondary school education with evidence of ability to profit by the course, and the best nursing training available in their countries ;
- (b) that the applicant is sufficiently familiar with the English language to be able to SPEAK, READ, and WRITE with ease, follow lectures and take notes. The Committee endorsing her application must ensure her acquiring such familiarity before the opening of the course. (If necessary it can be arranged for prospective students to spend one or two months in England for the purpose of studying English before the opening of the course. This additional expenditure will not be covered by the amount necessary for the year's course) ;
- (c) that the applicant will, on completion of the courses, be employed by a body approved by the Committee endorsing her application, in public health nursing, or hospital administration work.

The Committee at Bedford College responsible for the admission of students may, in exceptional circumstances, admit students who do not fulfil the above requirements in all respects, or withdraw from the course any student who does not prove able to profit by it.

### Fees, Etc.

The cost for each student is £250, which includes all tuition fees for lectures and individual tuition ; board and residence at 15, Manchester Square.

THIS AMOUNT DOES NOT INCLUDE TRAVELLING EXPENSES TO AND FROM LONDON.



## Scholarships

Each National Florence Nightingale Memorial Committee has been asked to provide if possible one or more scholarships of £250, IN ADDITION TO TRAVELLING EXPENSES, and to select candidates for these scholarships.

The full amount of the fees (£250) should be paid to the Florence Nightingale International Foundation, 15, Manchester Square, London, W.1, at the opening of the session.

## Application for Admission

Application for admission to the courses should be made on the special form provided for this purpose. These may be obtained from the National Florence Nightingale Memorial Committee. In countries where such committees have not yet been constituted, the forms can be obtained from the National Red Cross Society, or from the National Nurses' Association.

Copies may also be obtained from the League of Red Cross Societies, 12, Rue Newton, Paris 16e, or from the International Council of Nurses, 14, Quai Gustave Ador, Geneva (Switzerland).

Application forms accompanied by medical and dental certificates, and letter of recommendation, must be forwarded through the National Florence Nightingale Memorial Committee (or, when no such National Committee exists, through the National Red Cross Society, or National Nurses' Association) to the Secretary, Florence Nightingale International Foundation, 15, Manchester Square, London, W.1. before June.

---

## HOUSE COMMITTEE

### 15, Manchester Square

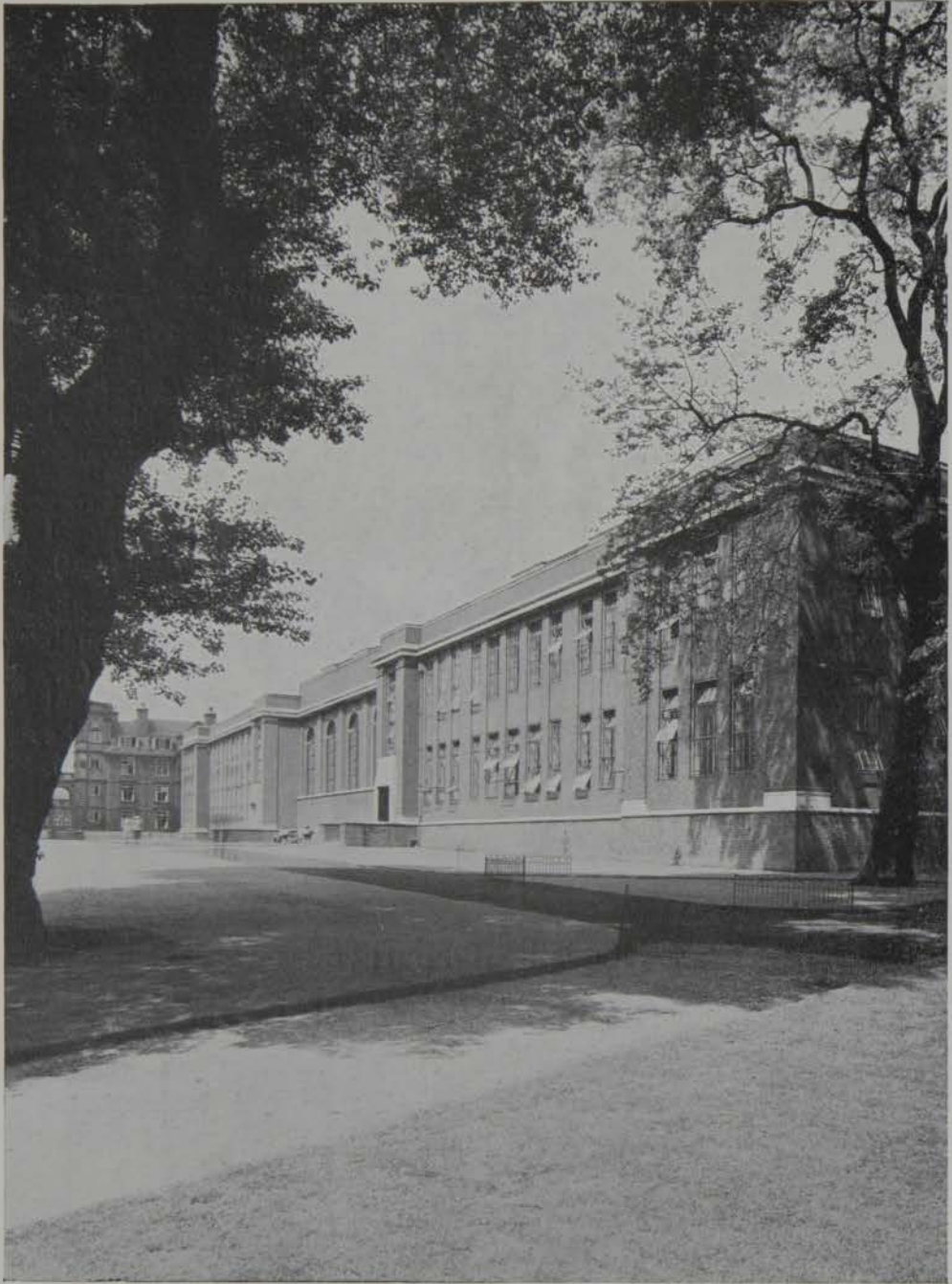
Students are required to live in residence at 15, Manchester Square, London, W.1. This is administered by a House Committee which is composed as follows :

Dame Sarah Swift ( <i>Chairman</i> ).	Miss G. E. M. Jebb.
Miss Cochrane.	Miss Leggatt.
Mrs. Bedford-Fenwick.	Dame Maud McCarthy.

---

WARDEN : Miss Nan L. Dorsey, R.N.

HON. MEDICAL ADVISER : W. E. Chiesman, M.A., M.B.,  
B.Chir. (Camb.), M.R.C.P.



BEDFORD COLLEGE

15. MANCHESTER SQUARE



## COURSE IN PUBLIC HEALTH

The aim of this course is to prepare nurses for administrative and teaching positions in all branches of public health nursing under state, municipal, or private authorities. It includes lectures, individual tuition and organised visits to social and health institutions illustrative of the theoretical instruction.

Students from tropical countries may attend courses in Tropical Nursing given at the College of Nursing.

In addition to the formal lectures, much time is given to demonstrations, discussions and coaching. Arrangements are made for each student to spend a short period with a public health department and to undertake public health nursing under supervision. Practical work is planned for each student with reference to the past experience and future work, and may include combined public health nursing in town and country areas. Also specialised work in Maternity and Child Welfare, School Nursing, and work in a Tuberculosis Dispensary.

The students have an opportunity of attending teaching clinics and listening to case conferences. They see and study various methods of record-keeping and supervision.

### Compulsory Subjects :

I.	Personal Hygiene and Public Health . . . . .	46	lectures
II.	Nutrition . . . . .	8	„
III.	Maternity and Child Welfare . . . . .	10	„
IV.	Tuberculosis . . . . .	6	„
V.	Public Health Nursing . . . . .	35	„
VI.	Social Administration . . . . .	30	„
VII.	Psychology . . . . .	45	„
VIII.	A Comparative Study of Some Modern Industrial Problems . . . . .	20	„

Physiology is required for all British students taking the Health Visitors' Examination of the Ministry of Health and for those students who have not reached the required standard.

### Optional Subjects :

IX.	Ethical Principles and Practical Problems. . . . .	6	lectures
X.	Eugenics . . . . .	9	„
XI.	Psychiatry . . . . .	6	„
XII.	Principles of Education and Methods of Teaching . . . . .	14	„

## COURSE FOR NURSE ADMINISTRATORS AND TEACHERS IN SCHOOLS OF NURSING

Trends in modern nursing education indicate the need of an appreciation on the part of student nurses of the preventive as well as the curative aspects of disease. Matrons of Hospitals, Directresses of Schools of Nursing and sister tutors are therefore finding it necessary to concern themselves with the social aspect of disease and with health teaching, as well as with instruction in nursing technique and the administration of a training school.

In addition, therefore, to courses in training school administration and methods of teaching, instruction is given in the social sciences and in public health.

Through affiliation with the College of Nursing, facilities are available for instruction in the organisation and administration of training schools and in methods of teaching, as well as for practical work in English hospitals. Excellent opportunities for social studies are provided at Bedford College for Women, where students may take additional subjects at the discretion of the Education Committee.

Preference will be given to nurses who already hold executive or teaching positions and who wish to study methods of training students and directing schools.

The following course of study is typical of that arranged for the average student:—

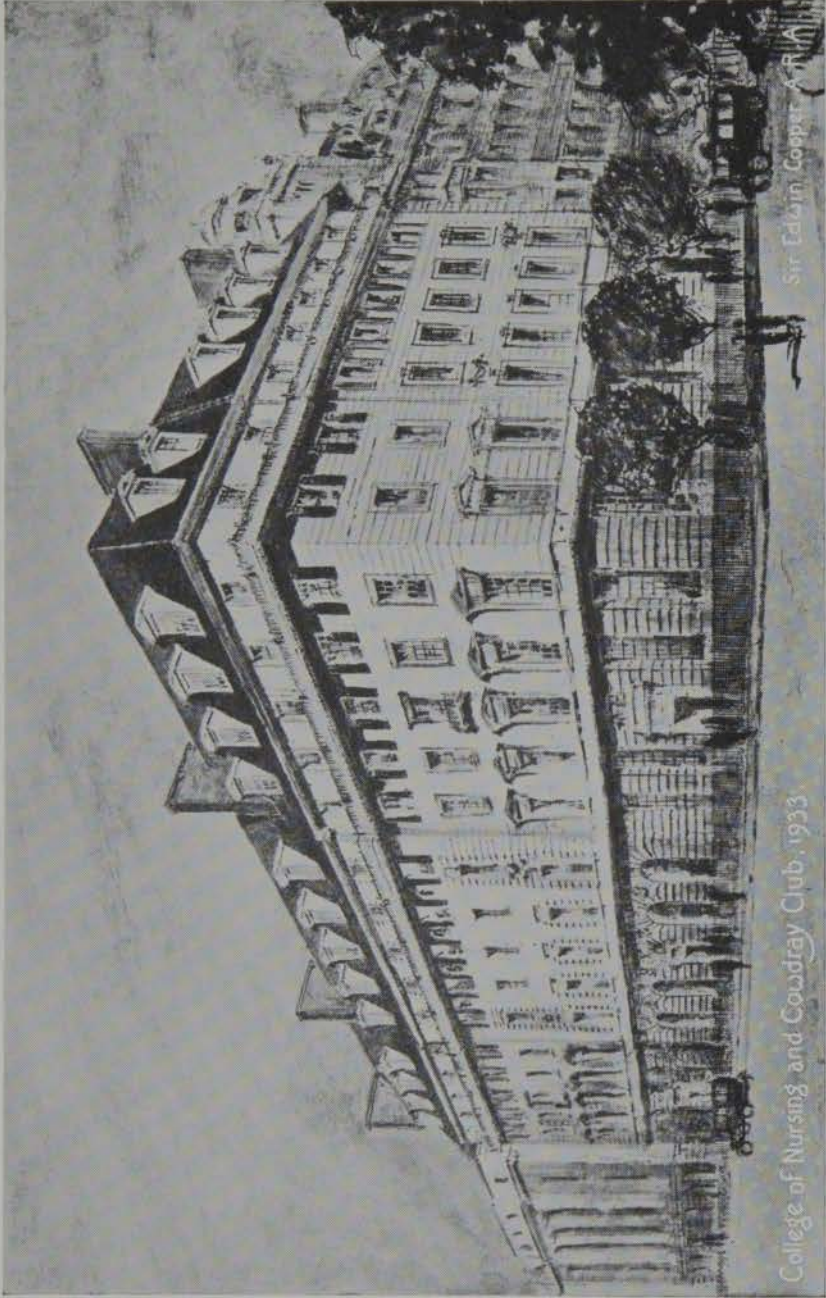
### Compulsory Subjects :

XIII.	History of Nursing . . . . .	10 lectures
XIV.	Principles of Hospital and Training School Administration . . . . . about	30 ,,
II.	Nutrition . . . . .	8 ,,
VII.	Psychology . . . . .	45 ,,
IX.	Ethical Principles and Practical Problems .	6 ,,
XII.	Principles of Education and Methods of Teaching . . . . .	14 ,,
I.	Personal Hygiene and Public Health . . .	46 ,,
VI.	Prevention and Relief of Distress . . . .	30 ,,

### Optional Subjects :

XI.	Psychiatry . . . . .	6 lectures
X.	Eugenics . . . . .	9 ,,
VIII.	A Comparative Study of Some Modern Industrial Problems . . . . .	20 ,,

Physiology may be substituted at the discretion of the Director of Studies.



College of Nursing and Coadray Club, 1933.

Sir Edwin Cooper, R.N.

## COURSE IN SOCIAL WORK

In certain countries, where organised social work has not yet been developed, public health nurses are being required to undertake work connected with the administration of public relief and may also be employed in the out-patient departments of Hospitals to develop the preventive and welfare aspect of the Hospital's work.

The course in Social Work is being offered to nurses from these countries where longer courses for social training are not available. Students from countries where a full training for social work is provided will only be admitted in exceptional circumstances.

The syllabus is drawn up on the assumption that the student is already a trained nurse and has attained a Public Health recognition in her own country. For this reason subjects such as Hygiene, Physiology, and Nutrition have been omitted.

The Practical Work will be arranged to give the student an understanding of Case Work in its broadest sense. This work will necessitate a previous knowledge of English, spoken and written. Experience will be given in such organisations as the Invalid Children's Aid Association and the Charity Organisation Society.

Students who successfully complete the course will be awarded an International Certificate. If any successful student should wish to prepare herself subsequently for any special branch of social work she would be expected to remain for at least another six months when special training will be arranged.

### Compulsory Subjects :

XV.	Social Conditions . . . . .	30	lectures
XVI.	Economics. The Modern Industrial System	30	„
VII.	Philosophy and General Psychology. Psycho- logy—Infancy and Adolescence. . . . .	45	„
XI.	Psychiatry . . . . .	6	„
IV.	Tuberculosis . . . . .	6	„

The Practical work will be planned to be continuous throughout most of the eleven months, and will occupy about 95 whole day periods.

## CURRICULUM

The choice of lecturers and details of syllabus are subject to alteration.

### I. Public Health and Personal Hygiene. (46 lectures.)

#### 1. HYGIENE—COMMUNAL AND PERSONAL.

Lt.-Col. G. S. Parkinson, D.S.O., M.R.C.S., L.R.C.P., D.P.H.

##### (i.) COMMUNAL (38 lectures).

These lectures deal with school hygiene and include the construction, equipment, ventilation, heating and lighting of schools; the powers and duties of school medical officers, the medical inspection of school children, the prevention and treatment of common ailments including dental diseases, defects of vision, diseases of the eye, defects of hearing and speech, heart and lung disease, ringworm, scabies, impetigo and other skin diseases. Consideration is given to the more important communicable diseases including certain epidemiological features, disease-producing organisms, immunity (natural and acquired), Schick and Dick testing, prophylactic inoculation, droplet infection, the carrier problem, vaccination; isolation hospitals and the segregation of contacts, disinfection and disinfectants. Disease vectors, which include flies, lice, bugs, mosquitoes and rats are described and their relationship to the spread of disease; disinfestation. The sources of information and calculation of vital statistics as applied to the health and welfare of communities are explained.

The course also deals with communal hygiene as applied to the construction of houses, heating and lighting, drainage and the disposal of refuse. Air and ventilation, cubic space; the wet and dry bulb thermometer and the Kata thermometer are explained. Lectures on food include the preservation of food, inspection of meat and fish, food poisoning, production of clean milk, milk grading, pasteurisation, dried and condensed milk, milk products.

Water supplies, daily requirements and distribution, storage and purification, water-borne disease, swimming baths are also studied.

Industrial hygiene is discussed in relation to industrial poisonings and accidents, occupational diseases, absenteeism and factory welfare.

##### (ii.) PERSONAL (8 lectures).

These lectures deal with the primary needs of the body, exercise and muscular work and their relation to physical fitness. Factors controlling body temperature, heat stagnation. The functions of the skin and the physiological aspects of clothing. Care of the special senses. Value of sunlight and artificial radiation. Welfare in factories, including hours of labour, fatigue, cloakrooms, water supplies and sanitary accommodation.



2. PUBLIC HEALTH ADMINISTRATION WITH SPECIAL REFERENCE TO THE WORK OF THE MEDICAL OFFICER AND HIS STAFF. (8 lectures.)

(By a Medical Officer of Health.)

These lectures commence with a description of the Ministry of Health and other Central and Local Authorities concerned with the health of the community.

The administration of schemes for Maternity and Child Welfare are discussed, and the routine duties of the responsible Public Health Departments.

The notification of infectious diseases, the following up of cases, and the particular problems concerned with the prevention and control of tuberculosis, ophthalmia neonatorum, puerperal fever and pyrexia, and venereal disease are also studied.

An outline is given of the methods employed in the inspection and control of food supplies.

The lectures on housing include: the inspection of a house, sanitary defects, housing sites, standards of overcrowding and slum clearance schemes.

These lectures are supplemented by the courses on Prevention and Relief of Distress and on Public Health Nursing, which deal with the subjects from another aspect.

**II. Nutrition.** (8 lectures.)

S. J. Cowell, M.D.

This course deals with the aims and methods of the study of nutrition, the composition of foods, their main and accessory constituents, with attention to the proteins, carbohydrates and fats, mineral salts and water. In the discussion on vitamins, fat soluble vitamins A and E and water soluble vitamins B and C are studied, and the calcifying Vitamin D in relation to the formation of the bones and teeth. Quantitative food requirements and methods for their calculation are considered. Ante-natal and child feeding, the feeding of the normal adult and modifications of the normal diet in diseased conditions will be dealt with.

**III. Maternity and Child Welfare.** (10 lectures.)

A. Doyne Bell, M.A., B.M. (Oxon.), M.R.C.P.

The lectures take the form of clinical demonstrations on the normal infant, physical and mental features and development; the general management of the normal infant and young child, nutrition, clothing, rest, exercise, etc.

The early detection of defects: nutritional, developmental, orthopædic. The treatment of minor ailments: skin conditions, ear and eye defects, tonsils and adenoids. The mentally abnormal child, the Mongol, Cretin, Microcephalic.

Other aspects of Maternity and Child Welfare will be dealt with in the lectures on 'Personal Hygiene and Public Health,' 'Public Health Nursing' and 'Prevention and Relief of Distress.'

#### **IV. Tuberculosis.** (6 lectures.)

S. Roodhouse Gloyne, M.D., D.P.H.

These lectures deal with tuberculosis in ancient civilisations and among primitive peoples; the growth of our knowledge of tuberculosis; our present-day conceptions of the disease; its infectivity; the prevalence of tuberculosis, a disease of civilisation. Morbidity and mortality rates in different countries are analysed and clinical types, "cures," seed and soil discussed. Consideration is given to tuberculosis and industry; the phthisis industries and the dust hazard, industrial fatigue and tuberculosis, social hygiene. Individual effort, voluntary organisations, State legislation and control in the fight against tuberculosis are dealt with, as well as disinfection; individual and racial immunity; the international aspects of the disease and its prevention.

#### **V. Public Health Nursing.** (30 lectures.)

Miss Olive Baggallay, S.R.N.

This course deals with the modern developments in public health nursing, its growth and organisation; the training and equipment of the public health nurse and the organisation of the work.

Different aspects of the nurse's work are considered in detail; bedside care in the home; the technical and educational work of the nurse in case of sickness; aseptic care of nursing appliances; the care of the mother during pre-natal, natal and post-natal period; infant welfare and the physical and mental welfare of the pre-school child. In connection with this section, the co-operation of the public health nurse with other health and educational workers is discussed and the English midwifery administration and rules of the Central Midwives Board are studied.

School nursing is dealt with in its various aspects and the nurse's work for the physical care of the school child, the correction of physical defects—also the educational aspect of her work and opportunities.

The equipment, staffing and management of various forms of clinics and mothercraft centres is considered, and the preparation of material and organisation of group classes of various kinds. The keeping of records and the compilation of reports is dealt with in detail and the various forms of public health nursing records are considered, the principles involved and methods of filing.

The subject throughout is dealt with from the point of view of the organisation and development of a complete service. The course includes lectures on administration and supervision; the development of public health nursing services in municipal and voluntary agencies.

Included in this course are lectures on propaganda and publicity, and demonstrations at a permanent health exhibit of the type of material useful for such exhibits and the best methods of display.

**VI. Social Administration.** (30 lectures.)

Dr. H. A. Mess, Ph.D.

These lectures deal with the public provision for the education, the care and protection of infants and children; care of the delinquent and neglected child; of the mentally defective and those of unsound mind; care of the physically defective, the aged and infirm; principles of relief and methods of family case work.

**VII. Psychology.** (45 lectures.)

1. GENERAL PSYCHOLOGY. (30 lectures.)

C. A. Mace, M.A. Cantab., University Reader  
in Psychology.

This course is intended to provide an elementary introduction to general psychological theory upon the basis of which the student may proceed to a more detailed study of special branches and special problems. The principal topics dealt with are: sensation and perception, memory, imagination, action, motivation, the theory of ability and of character. More detailed courses on some of these topics and on some of the principal branches of comparative and applied psychology are provided, *viz.*, on (i.) Abnormal Psychology; (ii.) Abilities and Disabilities; (iii.) Character and Temperament. Students are admitted to such special courses only on the recommendation of the Director of Social Studies.

2. PSYCHOLOGY OF INFANCY AND ADOLESCENCE.  
(15 lectures.)

Miss A. M. Jenkin, M.A., Ph.D. Lond.

These lectures are mainly concerned with the facts of mental growth from infancy to adolescence, with special reference to the normal development of interest and abilities and the importance of early influences in the formation of character. The adolescent period is viewed particularly in regard to the social problems to which it gives rise, and various forms of individual maladjustment are discussed.

**VIII. A Comparative Study of Some Modern Industrial Problems.** (20 lectures.)

Mrs. Williams, B.A., Manchester.

This course deals with the development and most important characteristics of the modern industrial system; the advantages and disadvantages, social and economic, of mass production; the causes of industrial unrest; trade unionism; the health of the industrial worker; welfare work and the special problems of women in industry; family endowment; unemployment.

**IX. Ethical Principles and Practical Problems.** (6 lectures.)

Miss L. S. Stebbing, D.Lit., Lond., Professor of  
Philosophy in the University of London.

This course deals with temperament and character in relation to conduct; the standpoint of value. Desire and effort; moral obligation and personal responsibility. Ethical principles involved in the justification of conduct. The individual and the community; self-control; loyalty; the claims of others; conflict of duties. The peculiar difficulties of membership of a community; the worth of persons.

**X. Eugenics.** (9 lectures.)

1. BIOLOGICAL INTRODUCTION TO EUGENICS.  
(4 lectures.)

Mrs. Edkins, D.Sc., Lond., Lecturer in Physiology.

2. SOCIAL APPLICATION OF EUGENICS. (5 lectures.)

Dr. H. A. Mess, Ph.D.

These lectures deal with the distinction between the effects of environmental and eugenic reform; racial poisons; social effects of venereal disease, of alcoholism; feeble-mindedness and the modes of social control. They also consider the habitual criminal and his treatment by segregation, lengthy or permanent; the burden of the less fit on the community; the encouragement of the more fit.

**XI. Psychiatry.** (6 lectures.)

Alice M. Hutchison, M.D., M.R.C.P.

This course deals with social maladjustments arising out of various forms of mental and physical disorder. The usual conception of epilepsy; the trend of modern investigation and the present position with regard to it are considered. Glandular therapy and types of deficiency; encephalitis lethargica and chorea; the uncontrollable child, including sex offences and the onset of habits, are discussed.

**XII. Principles of Education and Methods of Teaching.**  
(14 lectures.)

Mrs. Halsey, D.Sc.

1. In this course, the principles of psychology are applied to the science of education from the point of view of the teacher and from that of the student. Methods of presenting subject matter are discussed, to find means of sustaining interest and of stimulating independent thought and observation. The use of

imagination is considered with respect to description, narrative and illustration. The laws of memory are applied to economical methods of learning and retaining matter, and the advantages of routine activities compared with their limitations. The importance of suggestion; imitation and sympathy affecting the influence of a teacher and the result of class work. Examinations as a test of knowledge are considered. Some conclusions derived from the experimental study of mental fatigue are dwelt upon.

The lectures are followed by practice lessons or health talks taken by individual members of the class (each lesson 30 minutes).

2. The application of these principles to the teaching of practical nursing.

In addition to the above practice lessons, arrangements are made for each student to give two lessons to a group of pupils followed by criticism.

### **XIII. History of Nursing.** (10 lectures.)

Miss Hallows, M.A. Oxon, S.R.N.

This course considers the evolution of nursing from the earliest age to the present day; nursing in the ancient civilisations, the pre-Christian period; the influence of Christianity, the monastic, military and secular orders; the foundation and growth of the modern nursing movement.

### **XIV. Principles of Hospital and Training School Administration.** (30 lectures.)

1. HOSPITAL ADMINISTRATION. (10 lectures.)

R.H.P. Orde, B.A. Cantab.

This course deals with the definitions and classification of hospitals and the influence that the ideals underlying the foundation of hospitals have had upon the type and form of their administration; the factors that determine when and where hospitals should be established and the formation of the administrative organisation. Hospital planning is discussed from the administrative point of view, materials, installations, etc. The inter-relationship of the various departments, finance, accounts, and the numbers and duties of the staff are dealt with. The lectures also cover departmental administration: wards, kitchen and laundry; the purchase of supplies with its manifold problems, and the keeping, issuing and transport of stores. Statistical control, graphs, etc., are explained, and in-patient and out-patient departments and the volume of work done in relation to staff and cost discussed.

## 2. HOSPITAL TRAINING SCHOOL ADMINISTRATION.

(18 lectures and 5 demonstrations.)

13 lectures by Miss E. Macmanus, Matron of Guy's Hospital, London; 5 lectures by other specialists.

The lectures and demonstrations deal with the following subjects: types of Training Schools, administration of hospitals to which Training Schools may be attached; duties and responsibilities of the administrative officers and other members of the hospital staff; the student nurse; the nursing school; the preliminary school; the ward sister; ward management; the nurses' home; hospital housekeeping department; management of linen store and sewing room; the hospital laundry; the domestic staff; paying patients and other special departments; private nursing; matron's duties and office routine; committee procedure; legislation and professional organisation; general professional problems; social service.

The above lectures are supplemented by demonstrations in various hospitals.

## XV. Social Conditions. (30 lectures.) Dr. H. A. Mess, Ph.D.

(a) Principle of Relief: Family Case work: methods of helping those in distress. Use of social agencies, public and private. The organisation of Public Assistance. The relief of the able-bodied. Methods of relieving the infirm, the old, the sick. Public provision for the care of destitute children.

Public provision for education. Social services in connection with the care of necessitous children, delicate and defective children. The work of School Care Committees, and of After-care.

Public provision for the care of delinquent and defective children: the work of Juvenile Courts; the work of a probation officer; Home Office Schools; the Borstal system.

Public provision for the care of the mentally defective and persons of unsound mind.

(b) The Social Insurance Acts: public provision for the aged, the blind, the deaf.

The social aspect of Maternity and Child Welfare. Tuberculosis schemes. Housing and Town-planning.

## XVI. Economics—The Modern Industrial System.

(30 lectures.) Mrs. Williams, B.A. Manchester.

(a) Economics. The Modern Industrial System.

The organisation of Modern Industry: large scale production and its effects. Relations between employers and employed. The position of women in Industry. The organisation of the labour market.

(b) Elementary Economics: an introduction to Economic Theory.

Production and Exchange. International Trade. The Distribution of Wealth.

## LIST OF NURSES HAVING FOLLOWED THE COURSES

### Session 1920-21

#### PUBLIC HEALTH COURSE (First).

Elsa Andersson . . . . .	Sweden.
Jean Browne . . . . .	Canada.
Theophanie Body . . . . .	Yugoslavia.
Helen Hiriakoff . . . . .	Russia.
Anna Hanakova (née Nemcova). . . . .	Czechoslovakia.
Marjorie Killby (née Beeton) . . . . .	Great Britain.
Marie Josefowiczowa (née Chludzinska) . . . . .	Poland.
Dorothy Ledyard . . . . .	United States.
Jeanne Minier (née Mariau) . . . . .	France.
Vestalia de Manrique . . . . .	Venezuela.
Cécile Méchelynck . . . . .	Belgium.
Athina Messolora . . . . .	Greece.
Erica Michel . . . . .	Switzerland.
Lina Molinari . . . . .	Italy.
Maria Nottariu . . . . .	Roumania.
Charlotte Simon . . . . .	United States.
Lena Tidemand . . . . .	Denmark.
Maria Vega . . . . .	Peru.
Dora Westwood . . . . .	Portugal.

### Session 1921-22

#### PUBLIC HEALTH COURSE (Second).

Marie Anzenbacherova . . . . .	Czechoslovakia.
Boiana Christova . . . . .	Bulgaria.
Marianne Danko . . . . .	Austria.
Anna Erma . . . . .	Estonia.
Elsa Grivan . . . . .	Latvia.
Gizi de Hodossy . . . . .	Hungary.
Margaret James . . . . .	Great Britain.
Elizabeth Käsermann (née Deuchler) . . . . .	Mexico.
Nora Moore . . . . .	Canada.
Venny Snellman . . . . .	Finland.
Masayo Tabuchi . . . . .	Japan.
Edith Webster . . . . .	New Zealand.

### Session 1922-23

#### PUBLIC HEALTH COURSE (Third).

Aneta Bernescu . . . . .	Roumania.
Milda Birzniek (née Karin) . . . . .	Latvia.
Maynard L. Carter . . . . .	Great Britain.
Marie Cernat † 1931 . . . . .	Roumania.
Catherine Clark . . . . .	New Zealand.
Marie Drotz (née Lebel) . . . . .	France.
Gudny Einarsson (née Jonsson) . . . . .	Iceland.
Marthe Foltz (née Aeschmann) . . . . .	France.
Luisa Martinez de Aguiar y Pedroso . . . . .	Spain.
Frieda Maurer (née Soche) . . . . .	Austria.
Mercedès de Sayé (née Carrasco) . . . . .	Spain.
Gurli Segerberg . . . . .	Finland.
Ida Simmons . . . . .	Great Britain.
Frantiska Sucha † 1933 . . . . .	Czechoslovakia.
Clara Pal Prakong Vijasman (née Xavier) . . . . .	Siam.

### Session 1923-24

#### PUBLIC HEALTH COURSE (Fourth).

Léontine Adami . . . . .	Uruguay.
Madeleine Ahnne . . . . .	France.
Irene Charley . . . . .	Great Britain.
Amalia Bunch . . . . .	Denmark.
Otilie Coreth . . . . .	Austria.
Nan Dorsey . . . . .	United States.
Serafima Dreikant . . . . .	Latvia.
Hilda Hamburger . . . . .	Estonia.
Leopoldine van Hogendorp . . . . .	Netherlands.
Sigrid Larsson . . . . .	Finland.
Helena ter Meulen . . . . .	Netherlands.
Elise Moe . . . . .	Norway.
Julia Molnarova . . . . .	Czechoslovakia.
Katherine de Osztoics . . . . .	Hungary.
Maria de Steller . . . . .	Hungary.
Pepina Wolfbauer . . . . .	Austria.

### Session 1924-25

#### PUBLIC HEALTH COURSE (Fifth).

Maria Candia . . . . .	Paraguay.
Doris Christian . . . . .	New Zealand.
Marina Diomède . . . . .	Greece.
Gerda von Freyhold . . . . .	Germany.
Bertha Funke . . . . .	Austria.
Lucy Gough . . . . .	Great Britain.



Gabrielle Kaeckenbeeck . . . . .	Belgium.
Ann Kirkpatrick . . . . .	New Zealand.
Dora Koch . . . . .	Switzerland.
Samran Matra (née Lavasandha) . . . . .	Siam.

COURSE FOR NURSE ADMINISTRATORS AND TEACHERS IN SCHOOLS OF NURSING (First).

Harriet Baud . . . . .	Netherlands.
Hildur Hvoslef . . . . .	Norway.
Justine Kushke . . . . .	Latvia.
Joza Mocker (née Filipova) . . . . .	Czechoslovakia.
Janet Moore . . . . .	New Zealand.
Katina Nicolau (née Karava) . . . . .	Greece.
Margaret Potter (née Farquhar). . . . .	Great Britain.

Session 1925-26

PUBLIC HEALTH COURSE (Sixth).

Eleanor Mary Brinton . . . . .	Great Britain.
Lonna Fellner. . . . .	Austria.
Hilda Adelaide Fletcher . . . . .	United States.
Margarete Hübler . . . . .	Germany.
Krishnabai Phatak (née Kanetkar) . . . . .	India.
Winifred Eaton (née Knox) . . . . .	South Africa.
Mary Mochnacka . . . . .	Poland.
Konstanza Rabitsch . . . . .	Austria.
Alice Sher . . . . .	Latvia.
Marta Anna Sindlerova . . . . .	Czechoslovakia.
Kristin Olina Thorodssen . . . . .	Iceland.
Margaret Tsakova . . . . .	Bulgaria.
Hermione Blyth (née Whitehead) . . . . .	Great Britain.

COURSE FOR NURSE ADMINISTRATORS AND TEACHERS IN SCHOOL OF NURSING (Second).

Gladys Marguerite Bowes . . . . .	Great Britain.
Maj-Lis Edgren . . . . .	Finland.
Marie Alexandrine von Wacker. . . . .	Hungary.

Session 1926-27

PUBLIC HEALTH COURSE (Seventh).

Gertrude Davies . . . . .	Great Britain.
Elizabeth Dyson . . . . .	Great Britain.
Miliza Kipper † 1930 . . . . .	Estonia.
Marianne Kutschera † 1933 . . . . .	Austria.

Anna Mankova . . . . .	Czechoslovakia.
Clothilde Prigent (née Hennebert) . . . . .	France.
Isabel Prince (née Manson) . . . . .	Canada.
Gisela Rapatz . . . . .	Austria.
Adelaide Mann (née Spensley) . . . . .	South Africa.
Marie Stephan . . . . .	Germany.
Maria Wagner . . . . .	Austria.

COURSE FOR NURSE ADMINISTRATORS AND TEACHERS IN SCHOOLS OF NURSING (Third).

Marjorie Craven . . . . .	Great Britain.
Despina Cantacuzino . . . . .	Roumania.
Martha Dahl (née Hededam) . . . . .	Denmark.
Mercedes Mila . . . . .	Spain.
Grete Pick (née Sonnenberg) . . . . .	Austria.
Anna Schwarzenberg . . . . .	Austria.
Marie Strobl . . . . .	Austria.
Stephanja Ziembinska (née Potocka) . . . . .	Poland.

Session 1927-28

PUBLIC HEALTH COURSE (Eighth).

Sigridur Bachmann . . . . .	Iceland.
Maria van Bemmelen . . . . .	Netherlands.
Bernice Ch'en (née Pi Hui Chu) . . . . .	China.
Aloisia Clam-Martinić . . . . .	Austria.
Dayaldi Das . . . . .	India.
Ruby E. Hamilton . . . . .	Canada.
Miluse Kapsova . . . . .	Czechoslovakia.
Jadviga Leitan . . . . .	Latvia.
Maria Sarnthein . . . . .	Austria.
Jolanta Szapary . . . . .	Austria.
Elizabeth A. Vogel . . . . .	Switzerland.
Eleanor Ying . . . . .	China.

COURSE FOR NURSE ADMINISTRATORS AND TEACHERS IN SCHOOLS OF NURSING (Fourth).

Ruza Brodnik . . . . .	Yugoslavia.
Violet M. E. Jones . . . . .	Great Britain.
Waltraut Kudlich . . . . .	Austria.
Grete Lamberger . . . . .	Austria.
Helene Leon . . . . .	Austria.
Stefania Nutini . . . . .	Italy.
Jadwiga Suffczyńska . . . . .	Poland.
Ethel M. Warrington . . . . .	Great Britain.
Winifred K. Watts . . . . .	Great Britain.

## Session 1928-29

### PUBLIC HEALTH COURSE (Ninth).

Dolores Albo Marti . . . . .	Spain.
Hildegard Holzer . . . . .	Austria.
Natsuye Inouye . . . . .	Japan.
Maria Joosep . . . . .	Estonia.
Lisbeth Lippert . . . . .	Austria.
Katherine S. Martin . . . . .	South Africa.
Sanguan Phuang-Bhejr . . . . .	Siam.
Inga von Poosch . . . . .	Austria.
Jarmila Rousarova . . . . .	Czechoslovakia
Grace M. Swallow (née Hamblin) . . . . .	Great Britain.
Cory M. Taylor . . . . .	Canada.
Lucija Udriš (née Upman) . . . . .	Latvia.
Hester Viney . . . . .	Great Britain.
Marion Linda Wambeek . . . . .	Ceylon.

### COURSE FOR NURSE ADMINISTRATORS AND TEACHERS IN SCHOOLS OF NURSING (Fifth).

Albine Alberti . . . . .	Austria.
Herta Benedikt . . . . .	Austria.
Gertrud Englaender . . . . .	Austria.
Dorothy A. Lane . . . . .	Great Britain.
Annie Reineke . . . . .	Netherlands.
Montserrat Ripol Noble . . . . .	Spain.
Marja Rotterowna . . . . .	Poland.
Carmela Vidacovich . . . . .	Italy.
Elisabeth Walker (née Pusch) . . . . .	Germany.
Elaine Hills Young . . . . .	Great Britain.

## Session 1929-30

### PUBLIC HEALTH COURSE (Tenth).

Elsa Aberg . . . . .	Finland.
Cecilia Burgess . . . . .	India.
Yvonne Denoel . . . . .	France.
Kathleen W. Ellis . . . . .	Canada.
Ellen F. Horn . . . . .	South Africa.
Elly Kurrik . . . . .	Estonia.
Maria I. Mandl . . . . .	Austria.
Joyce E. Nobes . . . . .	Great Britain.
Berta Heuer y Ritter . . . . .	Mexico.
Agnes Thorotzkai . . . . .	Hungary.
Grace Trench . . . . .	Great Britain.

COURSE FOR NURSE ADMINISTRATORS AND TEACHERS IN SCHOOLS  
OF NURSING (Sixth).

Lillette Koléa . . . . .	Greece.
Marie Nicolova . . . . .	Bulgaria.
Ada Sharp . . . . .	Great Britain.
Marja Stencil . . . . .	Poland.
Kasimiera Vitkauskaite . . . . .	Lithuania.

Session 1930-31

PUBLIC HEALTH COURSE (Eleventh).

Eveline M. Crothers . . . . .	Great Britain.
Irmgard Fussenegger. . . . .	Austria.
Eleanor J. Merry . . . . .	Great Britain.
Gladys Parker. . . . .	Great Britain.
Eliamma Varughese (née Thomas). . . . .	India.

COURSE FOR NURSE ADMINISTRATORS AND TEACHERS IN SCHOOLS  
OF NURSING (Seventh).

Violetta Besesti . . . . .	Italy.
Zafira Christova . . . . .	Bulgaria.
Phorn Diskul . . . . .	Siam.
Thora Gudmundsson . . . . .	Iceland.
Elza Nulle-Siecenieks . . . . .	Latvia.
Elizabeth Petschnigg. . . . .	Austria.
Irmgard Staehle . . . . .	Germany.
Enni Voipio . . . . .	Finland.
Jadwiga Zukowska . . . . .	Poland.

Session 1931-32

PUBLIC HEALTH COURSE (Twelfth).

Roksanda Cabrinovic. . . . .	Yugoslavia.
Lila Florence Jacob . . . . .	India.
Elli Montin . . . . .	Finland.
Frantiska Picova . . . . .	Czechoslovakia.
Mary Edith Sharpe . . . . .	Great Britain.
Slava Smiljanic . . . . .	Yugoslavia.

COURSE FOR NURSE ADMINISTRATORS AND TEACHERS IN SCHOOLS  
OF NURSING (Eighth).

Eeva Aitto . . . . .	Finland.
Marjorie Fulton Barnett . . . . .	New Zealand.
Zoe Bourni . . . . .	Greece.
Aloisia Menich . . . . .	Hungary.
Dafinka Nikodimova. . . . .	Bulgaria.
Lucy Janet Ottley . . . . .	Great Britain.
Maria Senni . . . . .	Italy.
Zofia Wilkomirska . . . . .	Poland.

## Session 1932-33

### PUBLIC HEALTH COURSE (Thirteenth).

Maria Bettendorff . . . . .	Luxemburg.
Swatt Dharmasaroja . . . . .	Siam.
Veronika Monkute . . . . .	Lithiania.
Sarah I. J. Nel . . . . .	South Africa.
Vinka Sholjan . . . . .	Yugoslavia.
Cécile Theys . . . . .	Belgium.
Sylvia Weiss . . . . .	Great Britain.
Violet Caroline Wickham . . . . .	Great Britain.
Frantiska Zidová . . . . .	Czechoslovakia.

### COURSE FOR NURSE ADMINISTRATORS AND TEACHERS IN SCHOOLS OF NURSING (Ninth).

Alice Eden . . . . .	Great Britain.
Lara Jonsson . . . . .	Iceland.
Solveig Lier . . . . .	Norway.
Irena Weimanowna . . . . .	Poland.

## Session 1933-34

### COURSE IN PUBLIC HEALTH FOR NURSES (Fourteenth).

Ebba Katarina Brauer . . . . .	Sweden.
Marjorie Winifred Smith . . . . .	England.
Elizabeth Kerekrethy . . . . .	Hungary.
Dorothy Mitra . . . . .	India.
Luba Stoklisky . . . . .	Lithuania.
Fiorangela Codacci-Pisanelli . . . . .	Italy.
Birgit Kansanen . . . . .	Finland.
Marija Lela Vincek . . . . .	Yugoslavia.
Bridget Madge I. Ristori . . . . .	New Zealand.
Margaret Muire Wall . . . . .	Great Britain.

### COURSE FOR NURSE ADMINISTRATORS AND TEACHERS IN SCHOOLS OF NURSING (Tenth).

Olga Matyasova . . . . .	Czechoslovakia.
Jeanne Peza . . . . .	Greece.
Elizabeth C. Thompson . . . . .	Scotland.
Matilde Prida . . . . .	Mexico.
Bjorg Bachmann . . . . .	Iceland.
Carmen Maura . . . . .	Spain.
Jean Winifred Townsend . . . . .	Australia.

## Session 1934-35

### COURSE IN PUBLIC HEALTH FOR NURSES (Fifteenth).

Gergana Balabanova . . . . .	Bulgaria.
Gretta MacKay Ross . . . . .	Canada.
Elizabeth Smith . . . . .	Canada.
Anne M. Krohn . . . . .	Finland.
Alice Clamageran . . . . .	France.
Elli Behrendt . . . . .	Germany.
Dorothy M. Dickinson . . . . .	Great Britain.
Pamela R. Williamson . . . . .	Great Britain.
Mirdza Veilands . . . . .	Latvia.
Clara Grosskopf . . . . .	South Africa.
Florence Norman . . . . .	South Africa.

### COURSE FOR NURSE ADMINISTRATORS AND TEACHERS IN SCHOOLS OF NURSING (Eleventh).

Jean I. Masten . . . . .	Canada.
Christine C. Murray . . . . .	Canada.
Annette Pade . . . . .	Denmark.
Marie Demol . . . . .	France.
I. Barbara H. Renton . . . . .	Great Britain.
Margareta M. Sasburg . . . . .	Holland.
Ella M. Kopstad . . . . .	Norway.
Hendrika C. Fick . . . . .	South Africa.
Fatma Kemal . . . . .	Turkey.
Marian Zilley . . . . .	U.S.A.

### SPECIAL STUDENTS.\*

Itta Stelluti-Scala (née Frascara) (1922-23) . . . . .	Italy.
Rosa Rabello (1922-23) . . . . .	Brazil.
Rosa Hellich (1923-24) . . . . .	Yugoslavia.
Nikitza Blagojevitch (née Bovolini) (1924-25) . . . . .	Yugoslavia.
Theodorina Petrova (1924-25) . . . . .	Bulgaria.
Edvarda Hole (1933-34) . . . . .	Norway.

\* Bedford College course not followed.