





# THE COLLEGE OF NURSING

(INCORPORATED BY ROYAL CHARTER.)



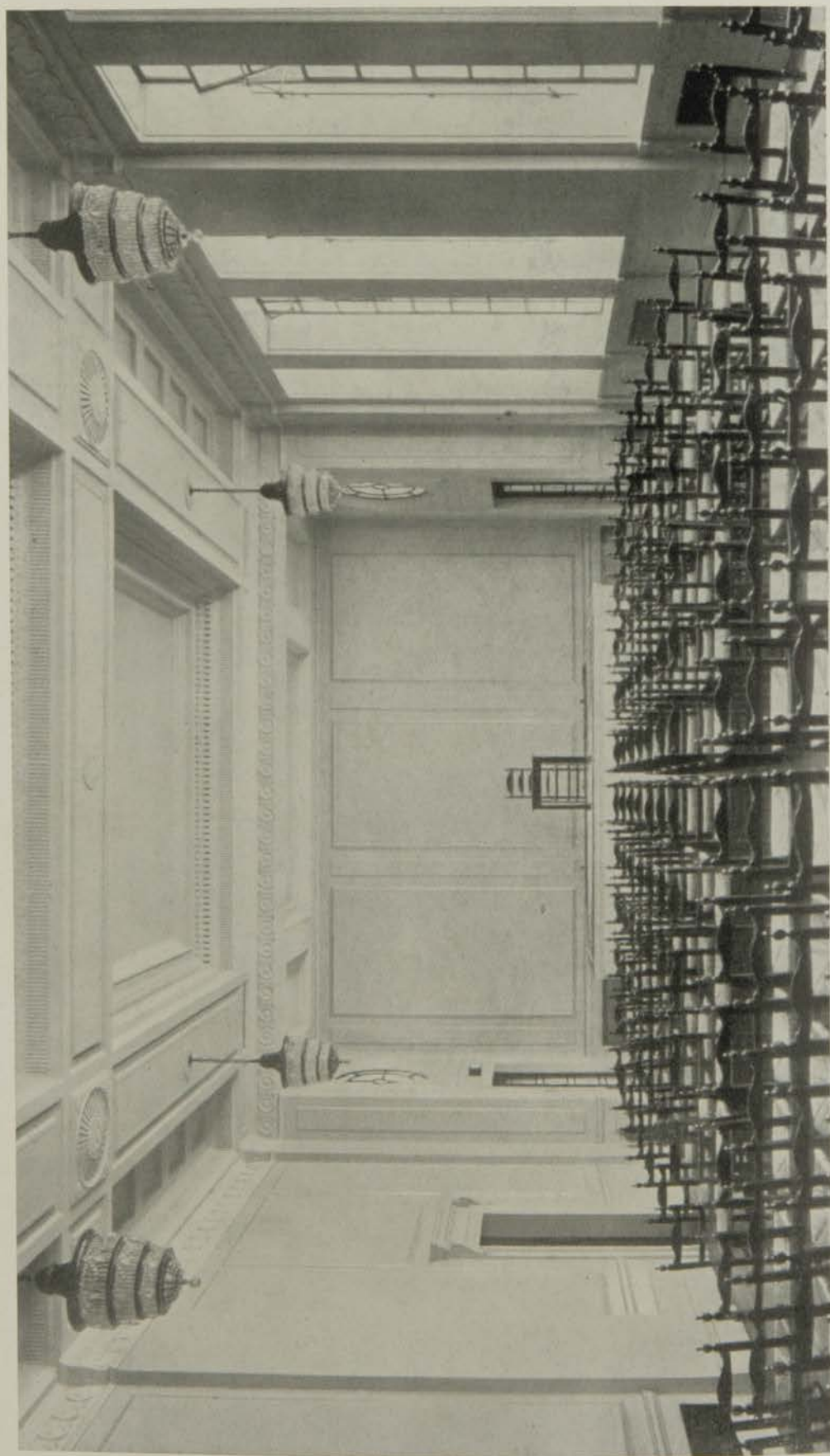
ANNOUNCEMENT  
OF THE  
DEPARTMENT of EDUCATION  
SESSION 1929-30

STUDY WEEK IN GENERAL NURSING : PRELIMINARY NOTICE.

It is proposed to hold a Study Week in General Nursing at the College of Nursing in May or June, 1930. The Course will include lectures and demonstrations dealing with modern methods of treatment, administration and teaching.



College of Nursing



THE MEMORIAL HALL

*Patroness :*

HER MAJESTY THE QUEEN

*President :*

Miss R. A. Cox-Davies, C.B.E., R.R.C.

*Chairman of Council :*

The Hon. Sir Arthur Stanley, G.B.E., C.B., M.V.O., LL.D.

*Hon. Secretary :*

Sir Cooper Perry, M.A., M.D., F.R.C.P.

*Hon. Treasurers :*

Comyns Berkeley, Esq., M.C., M.D.(Cantab.), F.R.C.P.

Dame Sarah Swift, G.B.E., R.R.C.

The Hon. Sir William H. Goschen, K.B.E.

*Secretary :* Miss Mary S. Rundle, R.R.C., D.N.*Librarian and Editor :* Miss Gertrude Cowlin*Registrar and Chief of Information Bureau :*

Miss E. M. May

*Education Officer :*

Miss R. M. Hallows, M.A.

*Secretary to Education Department and Tutor to Nurse Administrator Students :* Miss G. M. Bowes, A.R.R.C.*Secretary for Public Health Section and Tutor to Health Visitor Students :* Miss M. McEwan*Secretary to Local Branches :*

Miss M. D. Winter

*Secretary of Student Nurses' Association :*

Miss Sheriff-MacGregor, R.R.C.

*Education Committee :*Miss A. Lloyd Still, C.B.E., R.R.C., *Chairman*

Miss G. Bremner

Miss M. L. Lane

Miss E. F. C. Brown, R.R.C.

Miss M. V. Lindall

J. Cates, Esq., M.D., D.P.H.

Miss E. E. MacManus

Miss L. S. Clark, M.B.E.,

Miss G. M. Matthews

Miss E. F. Colburn [R.R.C.

Miss B. Monk, C.B.E., R.R.C.

Miss R. A. Cox-Davies,

Miss A. E. Musson, A.R.R.C.

C.B.E., R.R.C.

Miss H. Gregory Smith, R.R.C.

Miss M. Jones, A.R.R.C.

Mrs. E. A. Warren

*Co.-opted :* Miss O. Baggallay.

Miss R. E. Darbyshire, R.R.C.

Miss Milne.

# THE COLLEGE OF NURSING

(Incorporated by Royal Charter.)

---

## Department of Education.

### AIMS OF THE DEPARTMENT

The aim of the Department is to provide post-graduate lectures and courses of study in every branch of nursing, to improve methods of teaching, and to educate leaders for posts of responsibility, either in Schools of Nursing or in any public field in which the services of trained nurses are needed.

The College of Nursing works in close co-operation with the leading Schools of Nursing in the country and two of the Women's Colleges of the University of London.

### HISTORY OF THE DEPARTMENT

In 1918 a course for Sister Tutors was established at King's College of Household and Social Science, University of London, and four years later, at the request of the League of Red Cross Societies, a course for Nurse Administrators and Teachers in Schools of Nursing was arranged at Bedford College for Women, in conjunction with the College of Nursing.

In 1925 a further development took place, when the College of Nursing was approved by the Ministry of Health as a centre for the training of Health Visitors.

In 1926 the University of London established a Diploma in Nursing, and additional courses of lectures were arranged by the College of Nursing to meet the needs of nurses preparing for this examination.

### THE LIBRARY OF NURSING

This was established in 1921, with the assistance of a grant from the Carnegie United Kingdom Trust, as a borrowing and reference library, to serve as the Nursing Branch of the Central Library for Students, and is open without subscription to all Nurses. Books are posted to all parts of the United Kingdom, the borrower's only expense being postage.

Individual borrowers may have three books, and must renew them at the end of one month; group borrowers (at least ten persons) may have ten books at a time, and must renew them at the end of two months.



The Library is open :—

Wednesday and Friday	... ..	9.30 a.m. to 8 p.m.
Other Week Days, including the first Saturday of the Month...	... ..	9.30 a.m. to 4.45 p.m.
Other Saturdays	... ..	9.30 a.m. to 12.45 p.m.

### SCHOLARSHIPS

Two Scholarships endowed by Lady Cowdray, and valued at £135 each, are awarded annually by the College of Nursing to enable its members to undertake the Sister Tutors' course at King's College of Household and Social Science, University of London.

From time to time other Scholarships are offered by the College and its Branches to those members who wish to qualify as Health Visitors, Midwives, or to undertake some special course of Post-Graduate study.

A competitive examination is conducted by the College of Nursing in connection with the award of Scholarships offered by the College or its Branches. Examination fee 5s. (not returnable).

### ELLEN SARAH FOUNTAIN FUND

A grant of £10 is made annually to a member of the College of Nursing who, having been trained at one of the following hospitals :—

The Lambeth Hospital ;

The Dreadnought Hospital, Greenwich ;

The Brompton Hospital for Consumption, in affiliation with  
a General Hospital Training School,

undertakes to pursue an approved course of post-graduate study.

### COLLEGE LOAN FUND

Members of the College may borrow money at a low rate of interest from this fund, returnable within three years, for the purpose of post-graduate study or for professional purposes.

### FEEES

All fees, either for a course of study or for separate lectures, are payable in advance. The fee for the six months' full-time course of training for Health Visitors may be paid in two equal instalments.

## COURSES OF STUDY.

### COURSE OF TRAINING FOR HEALTH VISITORS

#### Approved by the Ministry of Health

This course is of six months' duration and is open to a nurse who has completed a three years' course of training in a hospital which was during the period of her training, or which has subsequently become, a training school approved by the General Nursing Council for England and Wales, the General Nursing Council for Scotland, or the Joint Nursing and Midwives' Council for Northern Ireland, for the purpose of admission to the general part of the Council's register.

Candidates should hold the certificate of the Central Midwives Board, but may enter for the course of training for Health Visitors provided they declare in writing their intention of obtaining that Certificate. The Health Visitor's Certificate approved by the Ministry of Health is not granted to the successful candidates until they become Certified Midwives.

(Prospective Health Visitors are eligible for a grant of £20 from the Ministry of Health in respect of Midwifery training.)

All candidates will be required to furnish evidence of a good general education, and the Council of the College reserves the right to refuse any applications for this Course of Training.

The Course is held twice yearly, beginning in October and January.

All applicants will be on four weeks' probation, and will be advised to discontinue their studies if considered unsuitable for the training. Candidates are expected to be regular in their attendance at lectures and demonstrations.

*Fee*—£25 10s. for the Course.

For students eligible for the grant from the Ministry of Health (Memo. 101 M.C.W.), this fee is reduced by £15.

*Maximum age of students upon entering Course who are eligible for a Ministry of Health grant*—35 years.

Fees may be paid in two instalments and are not returnable, but a Candidate who accepts the advice of the Council to discontinue her studies will not be required to pay the second instalment.

Candidates will enter for the examination approved by the Ministry of Health, for which the Royal Sanitary Institute is the Central Examining Body.

*Examination Fee*—£4 4s.

The Cost of Board and Accommodation must be met by the Candidate, and a list of Hostels and Addresses for Residence is issued by the College of Nursing.

### Syllabus

\*Hygiene and Public Health (including Sanitary Law) ;  
 Anatomy and Physiology ;  
 Communicable Diseases ;  
 Maternity and Child Welfare, including Hygiene of Married Life ;  
 Mental Hygiene ;  
 School Hygiene ;  
 Elementary Economics and Industrial Conditions ;  
 Methods of Teaching Health (Lectures and Practical Classes) ;  
 Social Administration ;  
 Nutrition and Domestic Economy ;  
 Tuberculosis ;  
 Venereal Disease.

### Practical experience includes

Maternity and Child Welfare in all its Branches ;  
 Health Visiting ;  
 Attendance at Clinics for the Treatment of—  
     Tuberculosis ;  
     Venereal Disease ;  
     Ophthalmia Neonatorum ;  
 District Nursing with Queen's Institute of District Nursing ;  
 Social Work at one of the Settlements ;  
 School Medical Service—including visits to special schools and school clinics.  
 \*Weekly visits of observation are arranged in connection with the lectures in Hygiene and Public Health.

### DIPLOMA IN NURSING—UNIVERSITY OF LONDON

The College arranges special courses of study for candidates preparing for this examination, which include instruction in Elementary Chemistry and Physics, Anatomy, Histology, Physiology, Bacteriology, Hygiene, Public Health, Psychology, History of Nursing Principles of Education, Hospital Administration.

With the kind co-operation of the leading training schools and of the special hospitals, practical post-graduate work can be arranged by the College of Nursing for those preparing for Part B of the examination.

### \*INSTRUCTION FOR EXISTING HEALTH VISITORS

Includes :—

Evening Tutorial Classes, supplemented by Demonstrations at the Parkes Museum.

Tuition Fee—£3.

### POSTAL COURSES

\*For Existing Health Visitors. 10 Lessons. Fee—£3 10s.

This course includes instruction in :—

Anatomy and Physiology ;  
Hygiene ;  
Nutrition ;  
Vital Statistics ;  
Sanitary Law.

Anatomy and Histology. 12 Lessons.	} Combined course,	£3.
Fee—£1 15s.		
Physiology. 12 Lessons. Fee—£1 15s.		

History of Nursing. 10 Lessons. Fee—£1 12s. 6d.

Elementary Physics and Chemistry. 15 Lessons. Fee—£2 15s.

Psychology. 16 Lessons. Fee—£3 10s.

Students are expected to undertake a definite course of reading—explanatory notes are sent with each lesson and test papers returned to the students with the necessary corrections and comments.

\*Intended primarily for those who by reason of three years' satisfactory service as whole-time Health Visitors are eligible to enter for the examination approved by the Ministry of Health.

---

## LIST OF LECTURES.

### \*MATERNITY AND CHILD WELFARE, INCLUDING HYGIENE OF MARRIED LIFE. 10 Lectures.

Legislation. Maternal and Infant Mortality. Welfare and Ante-Natal Centres. Health Visiting. The Normal Infant: before and after birth. General Management. Dental and Nasal Hygiene. Breast Feeding. Artificial Feeding. Feeding after Infancy. Prematurity. Gastro-Intestinal Defects. Rickets, Scurvy. Common ailments of childhood.

### †\*HYGIENE. 12 Lectures.

**Personal Hygiene.** Clothing. The necessity of exercise, rest and sleep for health. Care of the Feet; Postural defects. The value of fresh air, sunlight and artificial radiation. Importance of cleanliness, care of the skin in health and disease. The care of the more important senses and organs of the body.

**Domestic Hygiene.** Composition of air. Principles and methods of ventilation. Lighting and heating. Water supply. House drainage and Sanitary fittings. Sewage disposal. Collection and removal of refuse. Disinfection. Insect vectors of disease.

### †\*PUBLIC HEALTH. 12 Lectures.

Central Authorities, Local Government and Public Health administration. Local Government Act and Public Health Acts. Housing and Town Planning. Legislation dealing with the adulteration, contamination and protection of foods.

Milk—standards, designations and legislation.

Factory Legislation. Industrial Hygiene and occupational diseases. Welfare Orders. Employment of women, young persons and children.

Vital statistics.

### \*SCHOOL HYGIENE. 6 Lectures.

History and organisation of the School Medical Service. Principal legal measures affecting the school child. Medical Inspection and Treatment of School Children. Education and Treatment of Defective Children. Control of Infectious Disease in Schools. School Premises.

### †\*INDUSTRIAL CONDITIONS. 10 Lectures (at Bedford College for Women).

Development and characteristics of the modern industrial system. Advantages and disadvantages socially and economically of mass-production. Causes of industrial unrest. Trade Unionism. Women's industrial problems. Unemployment.

### †\*SOCIAL CONDITIONS AND SOCIAL ADMINISTRATION 10 Lectures (at Bedford College for Women).

The relief of destitution; changes in the administration of Public Assistance under the Local Government Act, 1929. The provision of Public education for children and adolescents. The Children Act, 1908, including the care of the neglected child; the treatment of the delinquent child; Industrial and Reformatory Schools; the Juvenile Court; the Probation System. The Care of the Mentally Defective. Insurance Schemes.

**\*COMMUNICABLE DISEASES. 8 Lectures.**

Sources of Infection. Modes of Transference. Prevention of Infection. Notification. Immunity and Investigation. Inoculation. General Sanitary Measures: Personal Hygiene. History: signs, symptoms, treatment, complications and Public Health importance of the principal communicable diseases.

**\*TUBERCULOSIS. 6 Lectures.**

Historical introduction. The Tubercle Bacillus and its Different Types. Predisposition and susceptibility. Heredity. The classification of Tuberculous disease. Modern theories of treatment. Theories of Infection. Tuberculosis Statistics. Sociological types and age groups. Regional Surveys. Housing and overcrowding. The Tuberculosis ridden industries. Fatigue and factory conditions in relation to Tuberculosis. Notification of Tuberculosis. State Schemes for the Treatment and Prevention of Tuberculosis. Employment of the Tuberculous. Disinfection. Education of the Patient and Anti-Tuberculosis Propaganda.

**\*VENEREAL DISEASES. 6 Lectures.**

Relative Incidence of the three main Venereal Diseases. Syphilis: short history, ætiology, effects on tissues, general course. Particular effects in pregnancy and on offspring. General Treatment; treatment in pregnancy.

Congenital Syphilis: Tests of Cure.

Gonorrhœa: ætiology; general course. Complications affecting women. Effects of gonorrhœa on pregnancy and on the puerperium. Effect on new born infants. Treatment of gonorrhœa in adults; Gonorrhœa in children. Prevention and treatment. Tests of Cure.

Public Health measures for the Control of Venereal Diseases.

**\*MENTAL DEFECT AND DISEASE. 6 Lectures.**

The Evolution of the Brain. Causes and types of mental defects. Care and treatment of the mental defective. Causes and types of insanity. Care of the insane and recent advances in treatment.

**\*PSYCHIATRY. 6 Lectures.**

General Principles of Psychiatry. The problem of the difficult Child. The problem of the Mother-Tied Child. Problems of Sex Development. Delinquency. Unhelpful habits.

**†\*NUTRITION. 8 Lectures.**

The Aims and Methods of the study of Nutrition. Composition of Foods—Proteins, Carbohydrates and Fats. Mineral salts and water. The Vitamins. Fat-soluble vitamins A and E and water-soluble vitamins B and C. The calcifying vitamin D in relation to the formation of the Bones and Teeth.

Quantitative Food Requirements and Methods for their calculation. Ante-natal and child feeding. Feeding of the normal adult.

Modifications of the normal diet in diseased conditions.

In connection with this course, special classes are arranged to deal with Comparative Costs, Family Budgets, Simple Theory of Cookery, Study of Equipment, and Demonstrations in Cookery and Marketing.

**\*APPLIED ANATOMY AND PHYSIOLOGY. 12 Lectures.**

Anatomy: Osseous System. Muscular System. Circulatory System. Lymphatic System. Respiratory System. Digestive, Absorptive and Excretory Systems. Reproductive System. Nervous System. Organs of Special Sense.

Physiology: Composition and Properties of Blood. Circulation. Respiration. Digestion. Metabolism. Excretion. Heat Regulation. Functions of Nervous System. Special Senses. Endocrine Glands.

**\*METHODS OF HEALTH EDUCATION, WITH STUDENTS' PRACTICE CLASSES. 8 Lectures and Practice Classes.**

The Teaching Function of the Health Visitor. The Learning Process. Methods of Teaching. Application to Health Education. Preparation of Material for Different Occasions—adults and children, individually and in groups. Methods of interesting the general public.

**†PRINCIPLES OF HOSPITAL ADMINISTRATION. 10 Lectures.**

The organisation and administration of Voluntary and State Hospitals, their constitution, relation to the community, personnel, and department management. Sources of income and control of expenditure. Purchase and supervision of supplies and equipment in all departments.

**†PRINCIPLES OF TRAINING SCHOOL ADMINISTRATION. 20 Lectures.**

Types of training schools and the various authorities responsible for their administration.

Legislation. The General Nursing Council. Professional Organisations.

The Matron's duties. Routine work of the Matron's Office, correspondence, reports, records. Ward visiting and inspection of hospital buildings. Procedure of meetings. Selection of Probationers. General arrangement of work. The curriculum. Preliminary training schools. Classroom equipment. The Nurses' Home.

Duties of Assistant Matron. Night Sister, Home Sister, Sister Tutors, Ward Sisters.

Management of special departments. Supervision of the domestic staff; daily workers. Insurance. Dietaries; staff and patients. The management of the kitchen, the store-room, laundry and linen room. Inventories. Private Nursing Staff. Nurses' Co-operations.

*In connection with the courses of lectures in Hospital and Training School Administration visits of observation are arranged to various types of hospitals.*

**†HISTORY OF NURSING. 12 Lectures.**

Evolution of nursing from the earliest age to the present day, including nursing in the ancient civilisations. Pre-Christian period. Influence of Christianity; the monastic, military and secular orders. Foundation and growth of the modern nursing movement. Legislation. Professional organisations. Recent developments and opportunities.

†**PRINCIPLES OF EDUCATION AND METHODS OF TEACHING, INCLUDING DEMONSTRATIONS AND PRACTICE LESSONS.** 15 Lectures.

Application of principles of psychology to the science of teaching. Problem of attention and the means by which interest can be maintained. Use of imagination in descriptive parts of a lesson. Illustration. Economical methods of learning and the factors on which memory depends. Some advantages and limitations of routine activities. The teacher's personality and the use of suggestion and sympathy. Methods of preparing notes for lectures and lessons. The problem of fatigue. Testing of knowledge by examination. Educational programme of a training school for nurses.

†**ANATOMY AND HISTOLOGY.** 12 Lectures.

Anatomy—Osseous system. Muscular system. Circulatory system. Lymphatic system. Respiratory system. Digestive, absorptive, and excretory systems. Reproductive system. Nervous system. Organs of special sense.

Histology—Microscopic structure of cells, tissues, and organs of body.

†**PHYSIOLOGY.** 12 Lectures.

Composition and properties of blood. Circulation. Respiration. Digestion. Metabolism. Excretion. Heat regulation. Functions of nervous system. Special senses. Endocrine glands.

†**ELEMENTARY BACTERIOLOGY.** 10 Lectures.

Microscope and its use. Micro-organisms in foods, water, sewage. Germs of tuberculosis, diphtheria, typhoid, pus; their incidence in body, dust. Sterilisation and Pasteurisation of food, milk. Vaccine and serum therapy. Anaphylaxis. Special diagnostic bacteriological tests.

†**ELEMENTARY CHEMISTRY AND PHYSICS.** 20 Lectures and Demonstrations.

Measurement. Difference between solids, liquids, gases. Air: composition, properties. Vapour pressure. Barometer. Hygrometer. Water: nature, composition, properties, behaviour with temperature, hard and soft water, softening and purification of water. Heat: temperature, change of state, transmission of heat. Light: propagation, reflection, refraction, radiation, methods of illumination. Sound: the production and transmission of sound, noises and musical notes, physical characteristics of sound waves. Elementary facts of electricity.

Matter: elementary and compound bodies, laws of chemical combination, the common elements and their compounds, combustion. Nature and constituents of food. Chemistry of Digestion. Crystalloids and colloids. Disinfectants and antiseptics.

†**PSYCHOLOGY.** 20 Lectures.

Introduction. Methods employed in study of Psychology. Evolution of behaviour. Native endowment of man. Fields of sense. Selectiveness of Mind. Instinctive behaviour. Intelligence. Emotions. Habit. Association of ideas. Memory and imagination. Disturbances of processes of perception and memory. Organisation of instinctive and emotional life. Formation of sentiments. Psycho-analytic method and the psycho-analytic theory of the unconscious. Dissociation, projection, fantasy.



**TROPICAL NURSING (Dame Sidney Browne Lectureship).  
12 Lectures.**

Malaria and Blackwater Fever. The Dysenteries. Sprue. Leishmaniasis. Ankylostomiasis and Worm Infections. Plague. Trypanosomiasis. Leprosy. Beri-beri. Heatstroke. Personal hygiene in the Tropics. Filariasis and Elephantiasis. Hepatic Abscess. Schistosomiasis. Malta, Dengue and other Fevers.

**TUTORIAL CLASSES FOR EXISTING HEALTH VISITORS  
WHO DESIRE TO PREPARE FOR THE EXAMINATION OF  
THE ROYAL SANITARY INSTITUTE. 14 Classes and  
Demonstrations.**

Applied Anatomy and Physiology. Water supplies and sewage disposal. Ventilation, warming and lighting. Personal hygiene, exercise, clothing. Nutrition. Vital statistics. Infectious diseases. Maternity and Child Welfare. School Hygiene. Public Health Laws. Revision and Test Papers.

\* Forming part of the course for Health Visitors.

† Specially arranged to cover the syllabus of the London University Diploma in Nursing.

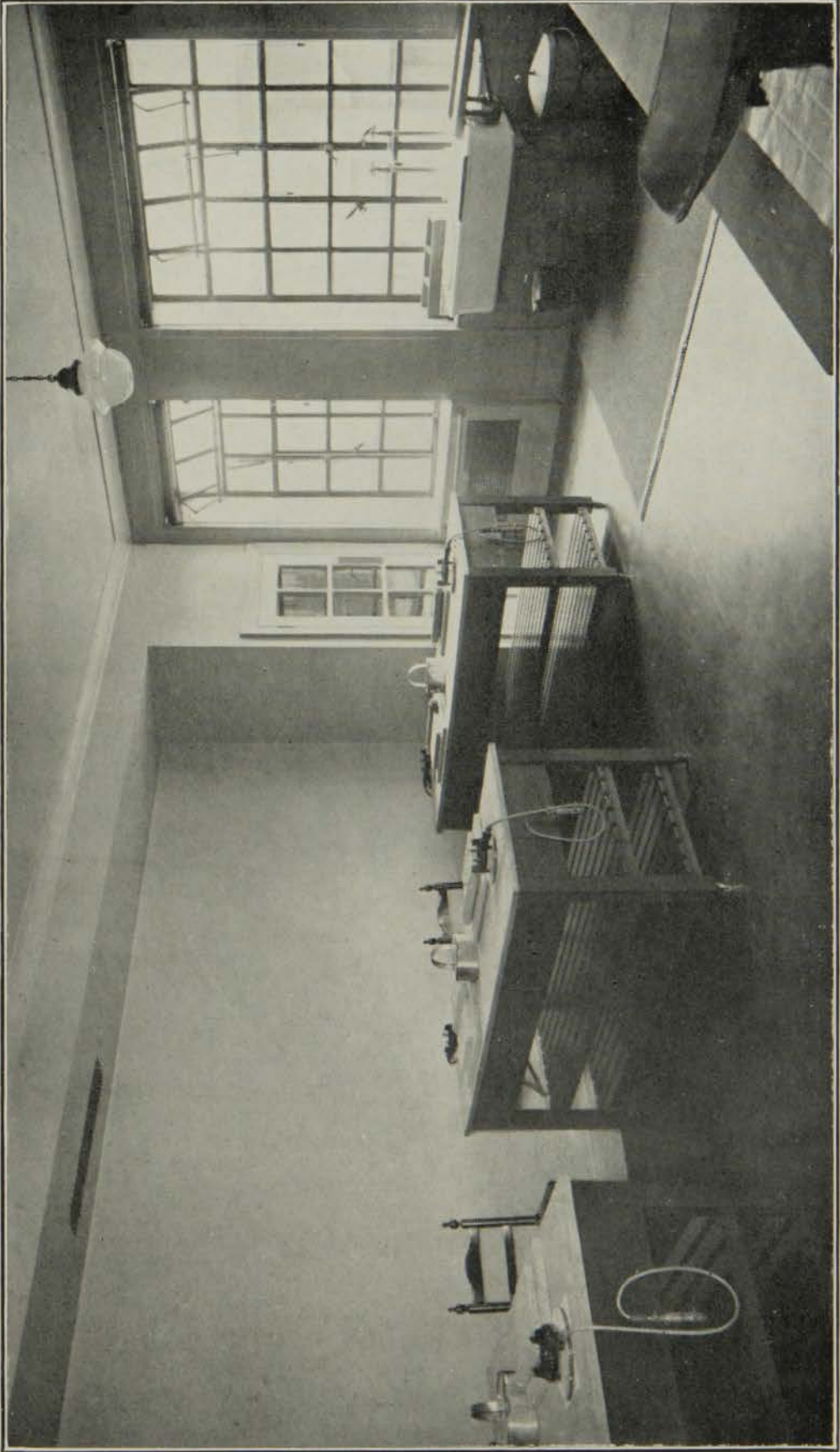
Further information may be obtained from :—

THE EDUCATION OFFICER,  
The College of Nursing,  
1a, Henrietta Street,  
Cavendish Square, W.1.

---

## LECTURERS.

<i>Hygiene and Public Health</i>	- -	Lieut.-Col. G. S. Parkinson, D.S.O., Assistant Director Public Health Division, London School of Hygiene and Tropical Medicine.
<i>Tuberculosis</i>	- - - -	S. Roodhouse Gloyne, M.D., D.P.H.
<i>Psychiatry</i>	- - - -	Miss Alice Hutchison, M.D., M.R.C.P.
<i>Mental Defect and Disease</i>	- -	} J. Cates, M.D., D.P.H.
<i>Tutorial Classes for Existing Health Visitors</i>	- - - -	
<i>Communicable Diseases</i>	- -	
<i>Anatomy</i>	- - - -	
<i>Physiology</i>	- - - -	J. Forest Smith, M.R.C.P., M.R.C.S.
<i>Bacteriology</i>	- - - -	J. Bamforth, M.B., Ch.B., D.P.H.
<i>Hospital Administration</i>	- -	R. H. P. Orde, B.A. (Cantab.), Hon. Sec. British Hospitals Association.
<i>Training School Administration</i>	-	Miss Musson, C.B.E., R.R.C., S.R.N.
<i>Tropical Diseases</i>	- - - -	W. E. Cooke, M.R.C.P., F.R.C.S.I., D.P.H.
<i>History of Nursing</i>	- - - -	} Miss R. Hallowes, M.A., S.R.N.
<i>Applied Anatomy and Physiology</i>	- -	
<i>Educational Psychology and Methods of Teaching</i>	- - - -	Mrs. Halsey, D.Sc.
<i>General Psychology</i>	- - - -	Miss Hazlitt, D.Litt. (London.)
<i>Maternity and Child Welfare</i>	-	Mrs. H. Chodak Gregory, M.D.
<i>School Hygiene</i>	- - - -	Mrs. Stalker, M.B., Ch.B., D.P.H.
<i>Methods of Health Education</i>	- -	{ Miss R. Hallowes, M.A., S.R.N. Miss M. McEwan, S.R.N.
<i>Chemistry and Physics</i>	- - - -	Miss Scarlett, L.I.A.
<i>Venereal Diseases</i>	- - - -	Col. L. W. Harrison, D.S.O., M.B., Ch.B., M.R.C.P.
<i>Nutrition</i>	- - - -	Prof. S. J. Cowell, M.D., University Professor in Dietetics at St. Thomas's Hospital Medical School.
<i>Social Administration</i>	- - - -	Mrs. Reid, M.A. (Cantab.)
<i>Industrial Conditions</i>	- - - -	Mrs. Williams, B.A. (Manchester)
		} Bedford College for Women.



DIETETIC KITCHEN



LABORATORY

COURSE FOR NURSE ADMINISTRATORS AND  
TEACHERS IN SCHOOLS OF NURSING, IN CON-  
JUNCTION WITH BEDFORD COLLEGE FOR WOMEN

AUGUST-JULY

SYLLABUS.

*Required Subjects—*

Hygiene - - - - -		} Bedford College for Women
Public Health - - - - -		
Prevention and relief of distress - - - - -		
Psychology—general - - - - -		
Psychology—applied - - - - -		
History of Nursing - - - - -	} College of Nursing	
Principles of Hospital Administration - - - - -		
Principles of Training School Administration - - - - -		
Principles of education and methods of Teaching - - - - -		
Nutrition - - - - -		

*Recommended Subjects—*

Comparative study of modern industrial Problems -		} Bedford College for Women
Biological introduction to Eugenics - - - - -		
Social application of Eugenics - - - - -		
Psychiatry - - - - -		

COURSE FOR SISTER TUTORS, IN CONNECTION  
WITH KING'S COLLEGE FOR WOMEN

SYLLABUS

*Required Subjects—*

Biology - - - - -		} King's College for Women
Bacteriology - - - - -		
Business Affairs - - - - -		
Institutional Administration - - - - -		
Hygiene and Infant Welfare - - - - -		
Elementary Science - - - - -		
Anatomy - - - - -		
Physiology - - - - -		

*Recommended Subjects—*

Economics - - - - -		} King's College for Women
Invalid Cookery - - - - -		
Psychology - - - - -		} Bedford College for Women
Principles of Education and methods of teaching - - - - -		
History of Nursing - - - - -		} College of Nursing

---

THE ABBEY PRESS LTD.,  
32 & 34, Great Peter Street,  
Westminster. S.W.1

---

